

935

SPECIFICATIONS

72/96/130 - 70mm

Injection Unit Specifications	English				Metric			
		A	B	C		A	B	C
Injection Capacity, Max. GPPS	oz	72	96	130	gm	2,041	2,722	3,686
Theoretical Disp	in ³	134.1	178.6	243.1	cm ³	2,198	2,926	3,983
Injection Performance, Note 1								
Max. pressure @ rate		30,000 psi @18.4 in ³ /sec	23,200 psi @24.5 in ³ /sec	17,000 psi @36.9 in ³ /sec		2,069 bar @302 cm ³ /sec	1,600 bar @401 cm ³ /sec	1,172 bar @605 cm ³ /sec
Max. rate @ pressure		48.5 in ³ /sec @15,200 psi	64.6 in ³ /sec @11,440 psi	87.9 in ³ /sec @8,400psi		795 cm ³ /sec @1,048 bar	1,059 cm ³ /sec @789bar	1,440 cm ³ /sec @580 bar
Max. Inj Speed, Note 1	in/sec	14.75	14.75	14.75	mm/sec	375	375	375
Max. Pack Press	psi	30,000	23,200	17,000	bar	2,069	1,600	1,172
Max. Pull Back Force	lbs	25,000	25,000	25,000	N	111,205	111,205	111,205
Plunger Stroke	in	40.75	40.75	40.75	mm	1,035	1,035	1,035
Plunger Diameter	in	2.04	2.36	2.76	mm	52	60	70
Extruder L/D Ratio-70 mm						30:1		
Extruder Performance-70 mm	rpm					265		
Barrel Heat Control								
No. of Pyrometers (barrel/nozzle)						10/1		
Total Heat Capacity	kw					65.25		
Sled Pull-in Force	ton		4.1		tonf		3.7	

Clamp Specifications						
Tonnage	ton		935	tonf		850
Maximum Daylight	in		94.49	mm		2,400
Max./Min. Mold Height	in		47.24/17.72	mm		1,200/450
Max. Mold Wt.	lbs		44,800	kg		20,325
Max. Clamp Stroke	in		47.24	mm		1,200
Clamp Speed						
Euromap Dry Cycle Time	sec		< 5	sec		< 5
Platen Size	in		68.3 x 60.8	mm		1,735 x 1,545
Tie Bar Spacing	in		49.21 x 39.37	mm		1,250 x 1,000
Tie Rod Diameter	in		7.87	mm		200
Ejector Stroke	in		10.8	mm		275
Max. Ejector Force	ton		19.7	tonf		17.9
Max. Eject Speed	in/sec		8.9	mm/sec		225

Machine Specifications						
Length, Note 2	in		460.4	mm		11,695
Width	in		118.0	mm		2,998
Height	in		105.1	mm		2,671
Centerline Height	in		58.0	mm		1,474
Shipping Weight (Clamp/Injection/Machine Total Weight)	lbs		94,000/21,000/115,000	kg		42,638/9,525/52,163

Electric Specifications			
Input Power Source			
230 VAC +/- 10% 3Ph 60Hz			
Power	Machine	kVA	91
Supply	Optional Core	kVA	11 (10 Hp) or 16 (15 Hp)
Capacity	Max. Total Capacity	kVA	107
Machine Transformer Size		kVA	118

Machine Requirements	
Water (Feedthroat)	6 gpm @ 50 psi
Air	80 psi @ 20 cfm

Notes: 1) Limitations may apply in certain conditions, 2) Working position with sled fwd



POWERLINE



935

SPECIFICATIONS

74/98/135/195 - 120mm

Injection Unit Specifications	English					Metric				
		A'	A	B	C		A'	A	B	C
Injection Capacity, Max. GPPS	oz	74	98	135	195	gm	2,098	2,778	3,827	5,528
Theoretical Disp	in ³	134.1	178.6	243.1	357.0	cm ³	2,198	2,926	3,983	5,873
Injection Performance, Note 1										
Max. pressure @ rate		35,000 psi @ 36.3 in ³ /sec	27,150 psi @ 48.4 in ³ /sec	19,950 psi @ 65.9 in ³ /sec	15,740 psi @ 82.4 in ³ /sec		2,414 bar @595 cm ³ /sec	1,872 bar @793 cm ³ /sec	1,376 bar @1,080 cm ³ /sec	1,085 bar @1,350 cm ³ /sec
Max. rate @ Pressure		72.5 in ³ /sec @ 20,975 psi	96.8 in ³ /sec @ 15,720 psi	131.8 in ³ /sec @ 11,570 psi	164.9 in ³ /sec @ 9,250 psi		1,205 cm ³ /sec @ 1,446 bar	1,585 cm ³ /sec @ 1,084 bar	2,144 cm ³ /sec @ 798 bar	2,702 cm ³ /sec @ 638 bar
Max. Inj Speed, Note 1	in/sec	22.0	22.0	22.0	18.7	mm/sec	558.8	558.8	558.8	475.0
Max. Pack Press	psi	35,000	27,150	19,950	15,740	bar	2,414	1,872	1,376	1,085
Max. Pull Back Force	lb	25,000	25,000	25,000	25,000	N	111,205	111,205	111,205	111,205
Plunger Stroke	in.	40.75	40.75	40.75	40.75	mm	1,035	1,035	1,035	1,035
Plunger Diameter	in.	2.04	2.36	2.76	3.34	mm	52	60	70	85
Extruder L/D ratio-120 mm							25:1			
Extruder Performance-120 mm		160rpm @ 6,975 ft-lbs @ 60% duty					7,575 ft-lbs @ 130 rpm @ 60% duty			
Barrel Heat Capacity										
No. Of Pyrometers (barrel/nozzle)							10/1			
Total Heat Capacity	kw						142.75			
Sled Pull-In Force	ton	4.1				tonf	3.7			

Clamp Specifications					
Tonnage	ton		935	tonf	850
Maximum Daylight	in		94.49	mm	2,400
Max./Min. Mold Height	in		47.24/17.72	mm	1,200/450
Max. Mold Wt.	lbs		44,800	kg	20,325
Max Clamp Stroke	in		47.24	mm	1,200
Clamp Speed					
Euromap Dry Cycle Time	sec		< 5	sec	< 5
Platen Size	in		68.3 x 60.8	mm	1,735 x 1,545
Tie Bar Spacing	in		49.21 x 39.37	mm	1,250 x 1,000
Tie Rod Diameter	in		7.87	mm	200
Ejector Stroke	in		10.8	mm	275
Max. Ejector Force	ton		19.7	tonf	17.9
Max. Eject Speed	in/sec		8.9	mm/sec	225

Machine Specifications					
Length, Note 2	in		484.2	mm	12,298
Width	in		118.0	mm	2,998
Height	in		108.7	mm	2,671
Centerline Height	in		58.0	mm	1,474
Shipping Weight (Clamp/Injection/Machine Total Weight)	lbs		94,000/31,000/125,000	kg	42,637/14,061/56,699

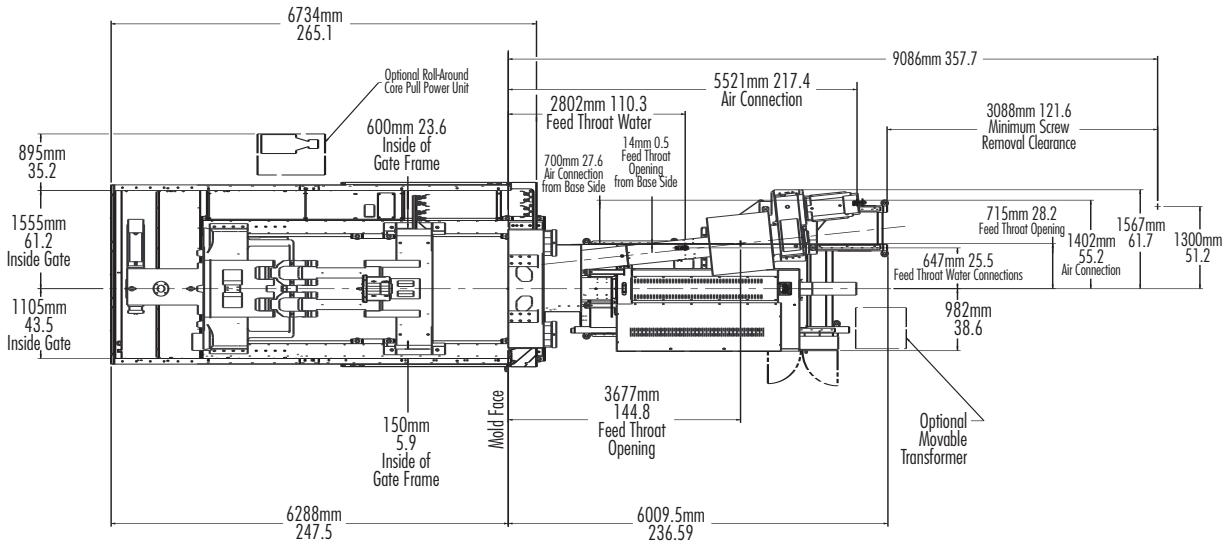
Electric Specifications					
Input Power Source					Independent
460 VAC +/- 10% 3Ph 60 Hz					
Power	Machine	kVA			190
Supply	Optional Core	kVA			11 (10 Hp) or 16 (15 Hp)
Capacity	Max. Total Capacity	kVA			206
Main Breaker Size		Amp			350

Machine Requirements					
Water Feedthroat)					4 gpm @ 50 psi
Air					80 psi @ 20 cfm

Notes: 1) Limitations may apply in certain conditions, 2) Working position with sled fwd

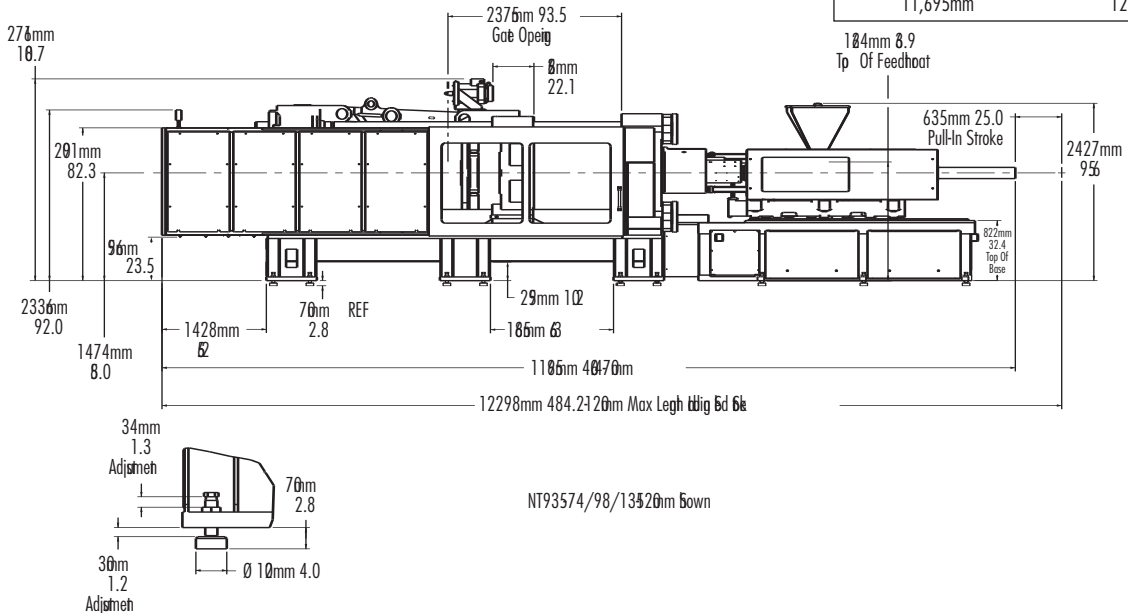
935

TEMPLATES



PLAN

Machine Length	
72/96/130-70mm	74/98/135-120mm
460.4	484.2
11,695mm	12,298mm



NT93574/98/13520mm Down

ELEVATION

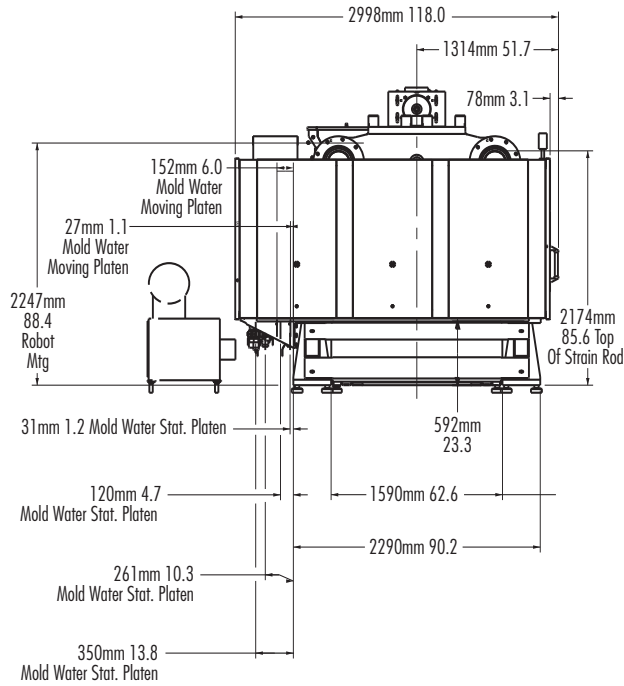


POWERLINE

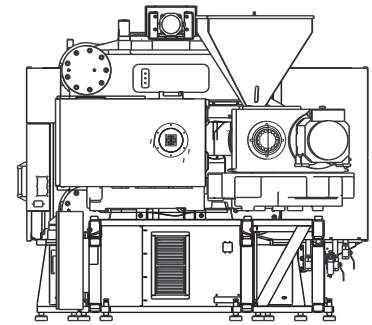


935

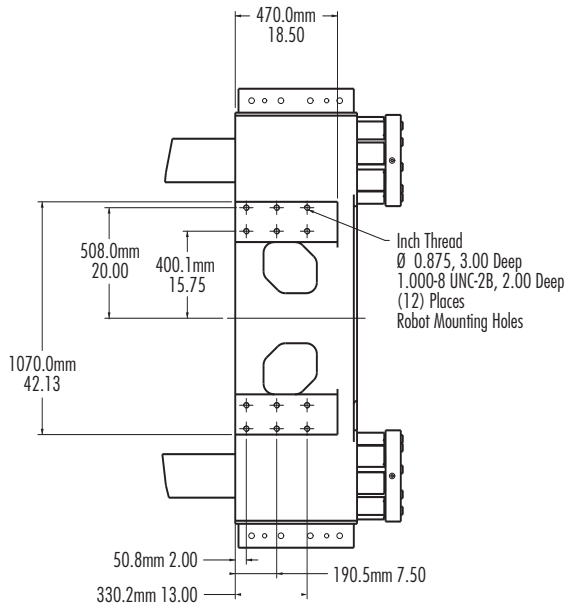
TEMPLATES



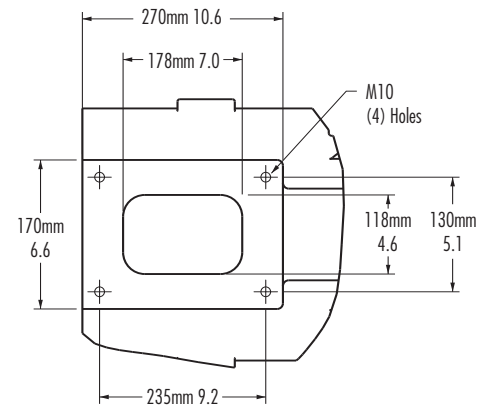
CLAMP END



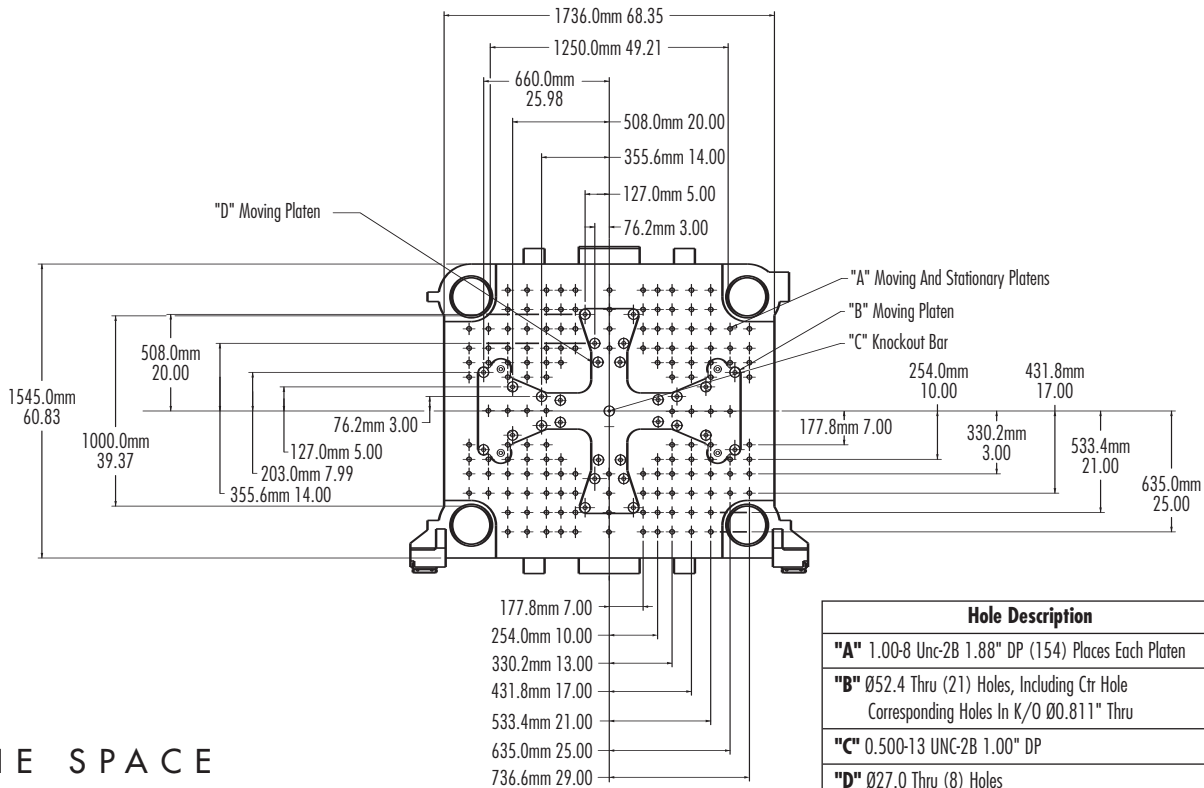
INJECTION END



ROBOT MOUNTING PATTERN

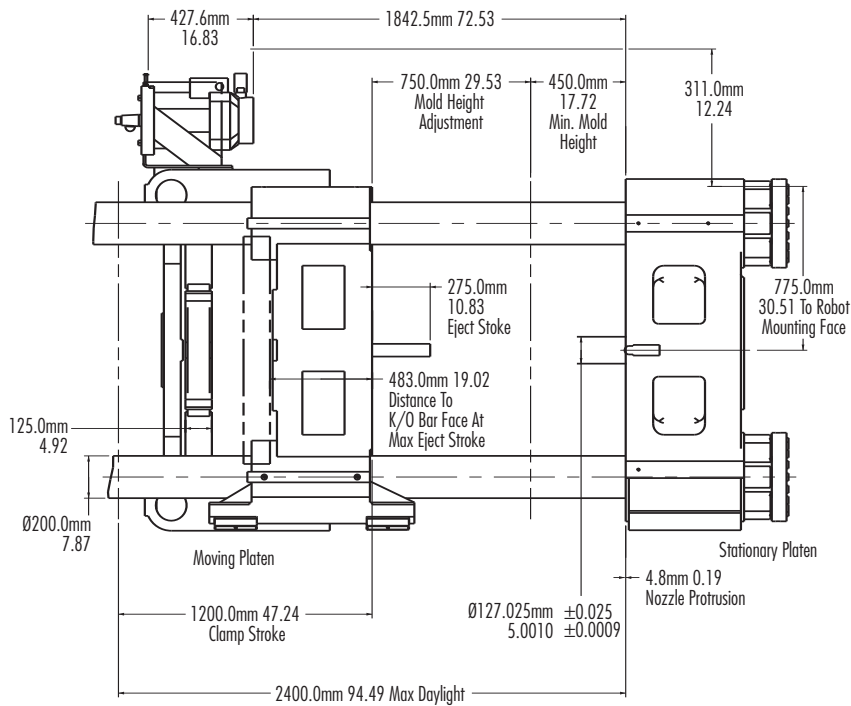


FEED THROAT
120MM EXTRUDER



Hole Description
"A" 1.00-8 Unc-2B 1.88" DP (154) Places Each Platen
"B" Ø52.4 Thru (21) Holes, Including Ctr Hole Corresponding Holes In K/O Ø0.811" Thru
"C" 0.500-13 UNC-2B 1.00" DP
"D" Ø27.0 Thru (8) Holes Corresponding Holes In K/O Ø0.811" Thru

DIE SPACE



PLATEN