



POWERLINE



750

SPECIFICATIONS

72/96/130 - 70mm

Injection Unit Specifications	English					Metric		
		A	B	C		A	B	C
Injection Capacity, Max. GPPS	oz	72	96	130	gm	2,041	2,722	3,686
Theoretical Disp	in ³	134.1	178.6	243.1	cm ³	2,198	2,926	3,983
Injection Performance, Note 1								
Max. pressure @ rate		30,000 psi@ 18.4 in ³ /sec	23,200 psi @24.5 in ³ /sec	17,000 psi @36.9 in ³ /sec		2,069 bar @302 cm ³ /sec	1,600 bar @401 cm ³ /sec	1,172 bar @605 cm ³ /sec
Max. rate @ pressure		48.5 in ³ /sec @15,200 psi	64.6 in ³ /sec @11,440 psi	87.9 in ³ /sec @8,400 psi		795 cm ³ /sec @1,048 bar	1,059 cm ³ /sec @789 bar	1,440 cm ³ /sec @580 bar
Max. Inj Speed, Note 1	in/sec	14.75	14.75	14.75	mm/sec	375	375	375
Max. Pack Press	psi	30,000	23,200	17,000	bar	2,069	1,600	1,172
Max. Pull Back Force	lbs	25,000	25,000	25,000	N	111,205	111,205	111,205
Plunger Stroke	in	40.75	40.75	40.75	mm	1,035	1,035	1,035
Plunger Diameter	in	2.04	2.36	2.76	mm	52	60	70
Extruder L/D Ratio-70 mm					30:1			
Extruder Performance-70 mm	rpm				265			
Barrel Heat Control								
No. of Pyrometers (barrel/nozzle)					10/1			
Total Heat Capacity	kw				65.25			
Sled Pull-in Force	ton		4.1		tonf		3.7	

Clamp Specifications				
Tonnage	ton	750	tonf	680
Maximum Daylight	in	78.74	mm	2,000
Max./Min. Mold Height	in	39.37/15.75	mm	1,000/400
Max. Mold Wt.	lbs	26,700	kg	12,100
Max. Clamp Stroke	in	39.37	mm	1,000
Clamp Speed				
Euromap Dry Cycle Time	sec	< 4.5	sec	< 4.5
Platen Size	in	57.1 x 60.0	mm	1,450 x 1,525
Tie Bar Spacing	in	40.16 x 40.16	mm	1,020 x 1,020
Tie Rod Diameter	in	7.09	mm	180
Ejector Stroke	in	9.84	mm	250
Max. Ejector Force	ton	16.9	tonf	15.3
Max. Eject Speed	in/sec	8.9	mm/sec	225

Machine Specifications			
Length, Note 2	in	424.1	mm
Width	in	109.0	mm
Height	in	105.1	mm
Centerline Height	in	58.0	mm
Shipping Weight			
(Clamp/Injection/Machine Total Weight)	lbs	70,000/21,000/91,000	kg

Electric Specifications			
Input Power Source			
230 VAC +/- 10% 3Ph 60Hz			Std.
Power Machine	kVA		88
Supply Optional Core	kVA		11 (10 Hp) or 16 (15 Hp)
Capacity Max. Total Capacity	kVA		104
Machine Transformer Size	kVA		118

Machine Requirements		
Water (Feedthroat)		6 gpm @ 50 psi
Air		80 psi @ 20 cfm

Notes: 1) Limitations may apply in certain conditions, 2) Working position with sled fwd

750

SPECIFICATIONS

74/98/135/195 - 120mm

Injection Unit Specifications	English				Metric					
	A'	A	B	C	A'	A	B	C		
Injection Capacity, Max. GPPS	oz	74	98	135	195	gm	2,098	2,778	3,827	5,528
Theoretical Disp	in ³	134.1	178.6	243.1	357.0	cm ³	2,198	2,926	3,983	5,873
Injection Performance, Note 1										
Max. pressure @ rate		35,000 psi @ 36.3 in ³ /sec	27,150 psi @ 48.4 in ³ /sec	19,950 psi @ 65.9 in ³ /sec	15,740 psi @ 82.4 in ³ /sec		2,414 bar @ 595 cm ³ /sec	1,872 bar @ 793 cm ³ /sec	1,376 bar @ 1,080 cm ³ /sec	1,085 bar @ 1,350 cm ³ /sec
Max. rate @ Pressure		72.5 in ³ /sec @ 20,975 psi	96.8 in ³ /sec @ 15,720 psi	131.8 in ³ /sec @ 11,570 psi	164.9 in ³ /sec @ 9,250 psi		1,205 cm ³ /sec @ 1,446 bar	1,585 cm ³ /sec @ 1,084 bar	2,144 cm ³ /sec @ 798 bar	2,702 cm ³ /sec @ 638 bar
Max. Inj Speed, Note 1	in/sec	22.0	22.0	22.0	18.7	mm/sec	558.8	558.8	558.8	475.0
Max. Pack Press	psi	35,000	27,150	19,950	15,740	bar	2,414	1,872	1,376	1,085
Max. Pull Back Force	lb	25,000	25,000	25,000	25,000	N	111,205	111,205	111,205	111,205
Plunger Stroke	in.	40.75	40.75	40.75	40.75	mm	1,035	1,035	1,035	1,035
Plunger Diameter	in.	2.04	2.36	2.76	3.34	mm	52	60	70	85
Extruder L/D ratio-120 mm							25:1			
Extruder Performance-120 mm		160rpm @ 6,975 ft-lbs @ 60% duty					7,575 ft-lbs @ 130 rpm @ 60% duty			
Barrel Heat Control										
No. Of Pyrometers (barrel/nozzle)							10/1			
Total Heat Capacity	kw						142.75			
Sled Pull-In Force	ton	4.1				tonf	3.7			

Clamp Specifications						
Tonnage	ton		750		tonf	680
Maximum Daylight	in		78.74		mm	2,000
Max./Min. Mold Height	in		39.37/15.75		mm	1,000/400
Max. Mold Wt.	lbs		26,700		kg	12,100
Max. Clamp Stroke	in		39.37		mm	1,000
Clamp Speed						
Euromap Dry Cycle Time	sec		< 4.5			<4.5
Platen Size	in		57.1 x 60.0		mm	1,450 x 1,525
Tie Bar Spacing	in		40.16 x 40.16		mm	1,020 x 1,020
Tie Rod Diameter	in		7.09		mm	180
Ejector Stroke	in		9.84		mm	250
Max. Ejector Force	ton		16.9		tonf	15.3
Max. Eject Speed	mm/sec		8.9		mm/sec	225

Machine Specifications						
Length, Note 2	in		458.1		mm	11,637
Width	in		109.0		mm	2,768
Height	in		105.1		mm	2,671
Centerline Height	in		58.0		mm	1,474
Shipping Weight						
(Clamp/Injection/Machine Total Weight) *	lbs		70,000/31,000/101,000		kg	31,751/14,061/45,813

Electric Specifications				
Input Power Source				Independent
460 VAC +/- 10% 3Ph 60 Hz				
Power Machine	kVA			190
Supply Optional Core	kVA			11 (10 Hp) or 16 (15 Hp)
Capacity Max. Total Capacity	kVA			206
Main Breaker Size	Amp			350

Machine Requirements		
Water (Feedthroat)		4 gpm @ 50 psi
Air		80 psi @ 20 cfm

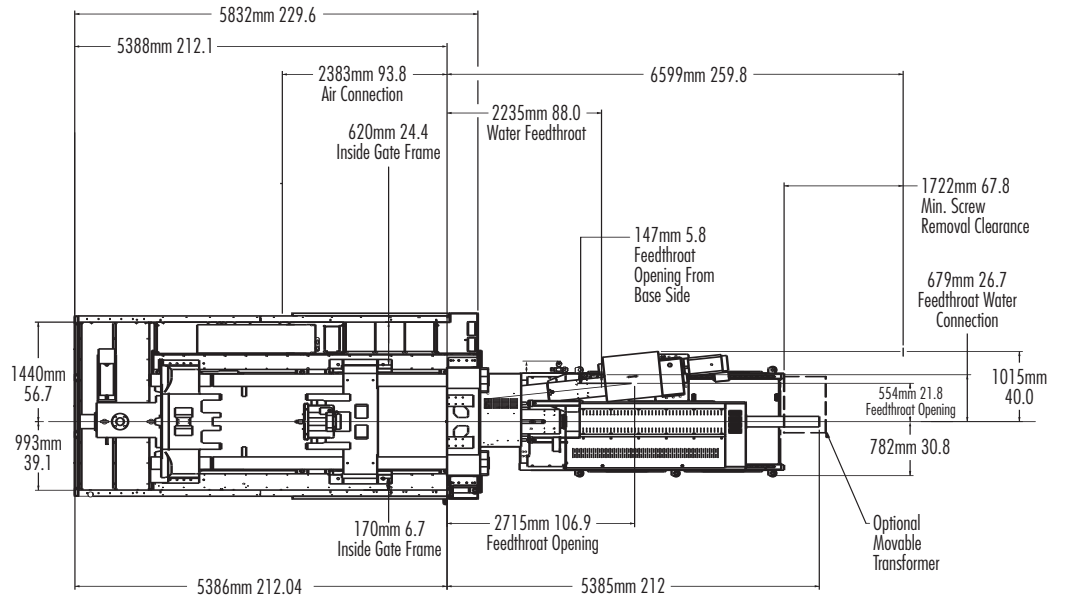
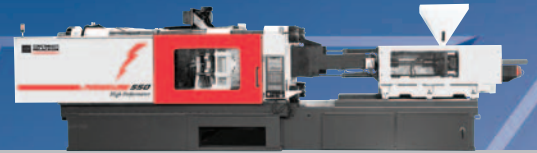
Notes: 1) Limitations may apply in certain conditions, 2) Working position with sled fwd



POWERLINE

750

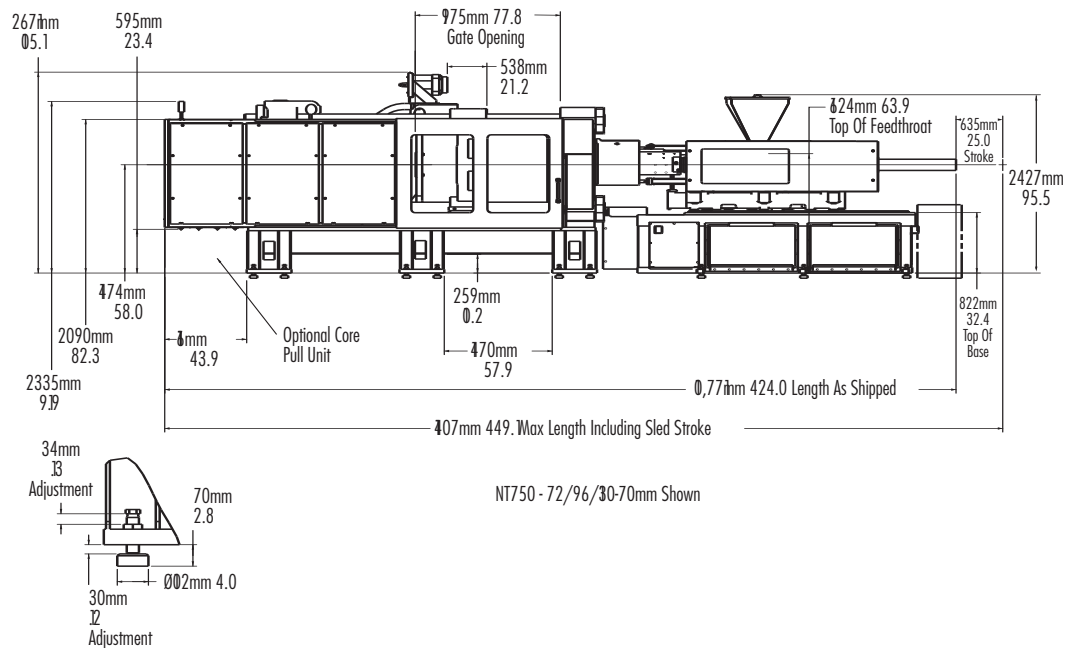
TEMPLATES



Machine Length, Sled Forward

72/96/130-70mm	74/98/135-120mm
424.1	458.1
10,771mm	11,637mm

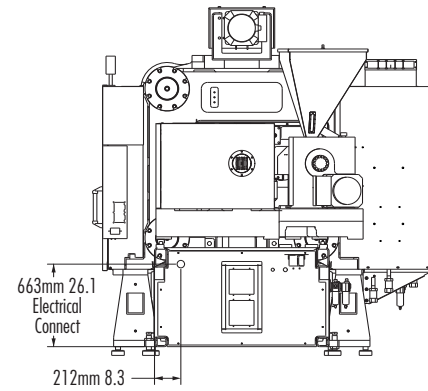
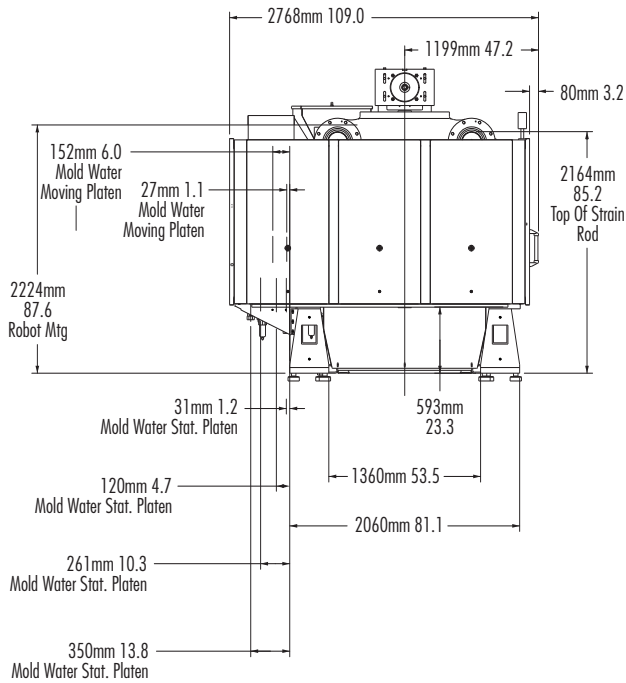
PLAN



ELEVATION

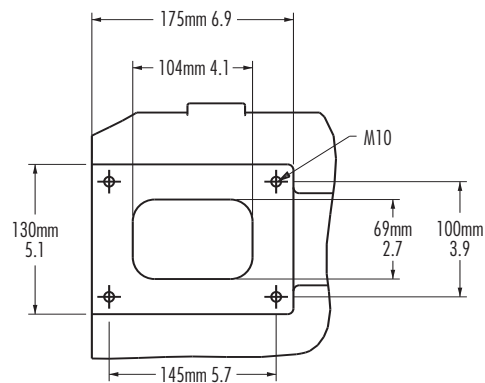
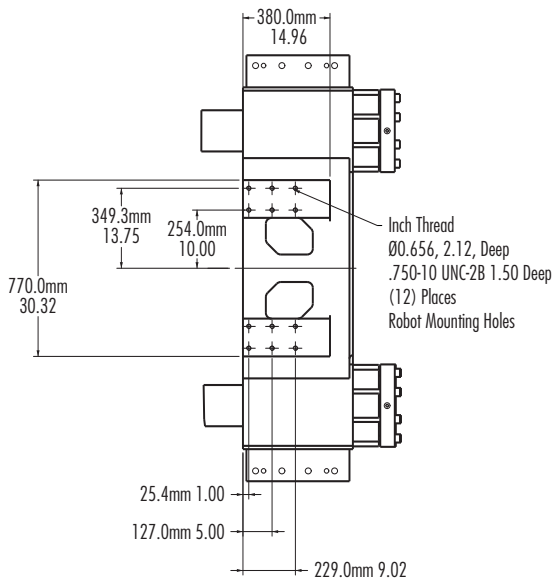
750

TEMPLATES



CLAMP END

INJECTION END



ROBOT MOUNTING PATTERN

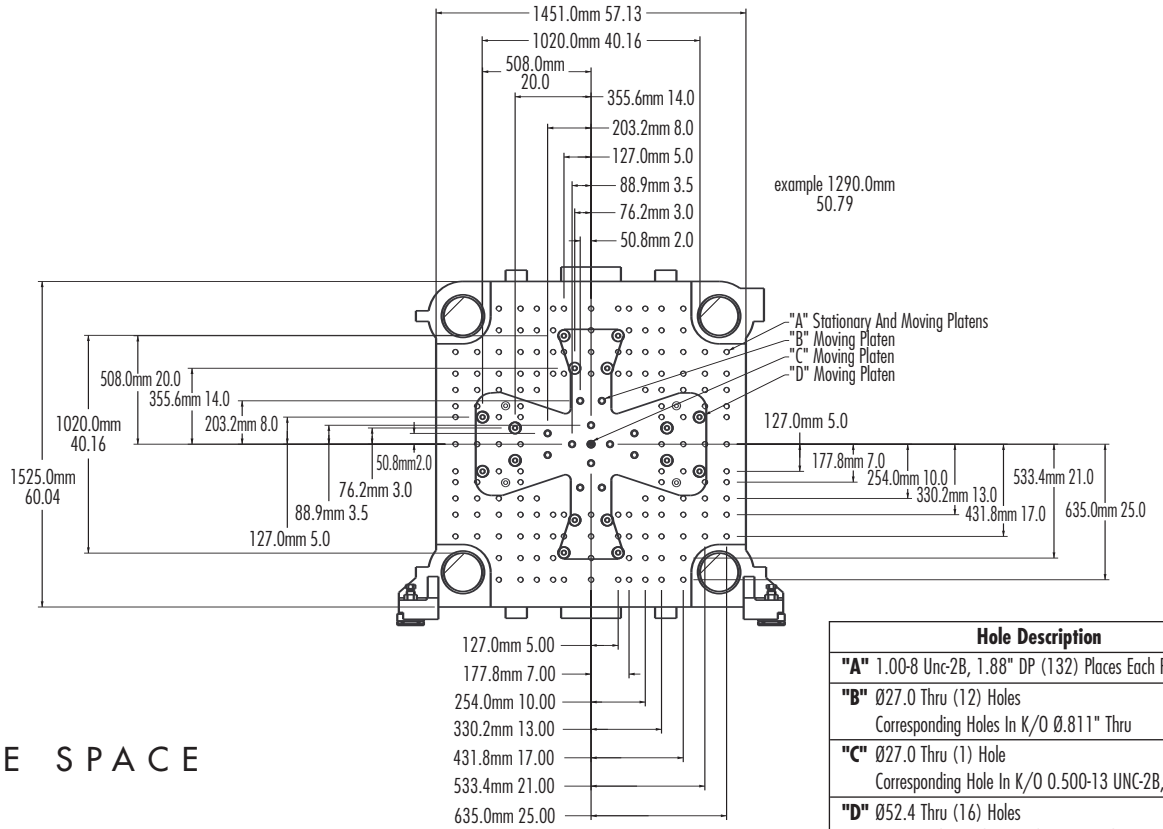
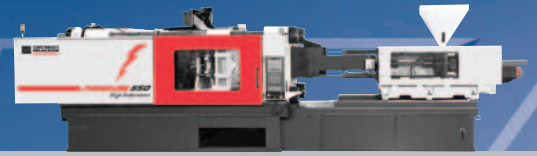
FEED THROAT
70MM EXTRUDER



POWERLINE

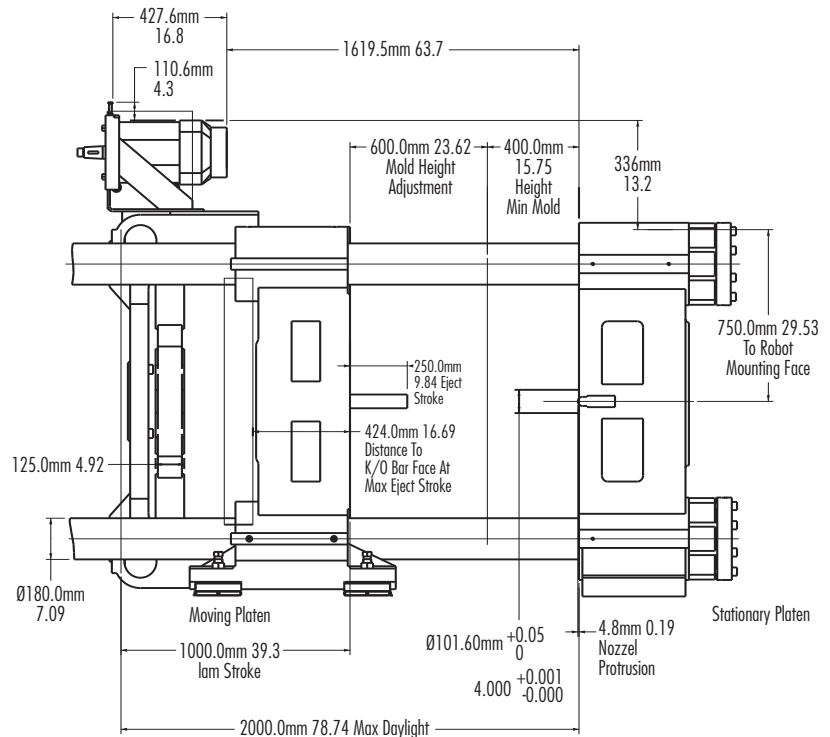
750

TEMPLATES



DIE SPACE

Hole Description	
"A"	1.00-8 Unc-2B, 1.88" DP (132) Places Each Platen
"B"	Ø27.0 Thru (12) Holes Corresponding Holes In K/O Ø.811" Thru
"C"	Ø27.0 Thru (1) Hole Corresponding Hole In K/O 0.500-13 UNC-2B, 1.00" DP
"D"	Ø52.4 Thru (16) Holes Corresponding Holes In K/O Ø.811" Thru



PLATEN