

440

SPECIFICATIONS

30/40/55 - 70mm

Injection Unit Specifications	English				Metric			
		A	B	C		A	B	C
Injection Capacity, Max. GPPS	oz	30	40	55	gm	850	1,134	1,559
Theoretical Disp	in ³	55.8	74.5	99.2	cm ³	914	1,221	1,626
Injection Performance, Note 1								
Max. pressure @ rate		35,000 psi @19 in ³ /sec	30,000 psi @18.5 in ³ /sec	22,500 psi @23.5 in ³ /sec		2,414 bar @311 cm ³ /sec	2,069 bar @303 cm ³ /sec	1,552 bar @385 cm ³ /sec
Max. rate @ pressure		28 in ³ /sec @26,000 psi	37.5 in ³ /sec @19,500 psi	49.5 in ³ /sec @14,800 psi		459 cm ³ /sec @1,793 bar	615 cm ³ /sec @1,345 bar	812 cm ³ /sec @1,020 bar
Max. Inj Speed, Note 1	in/sec	11.3	11.3	11.3	mm/sec	287	287	287
Max. Pack Press	psi	35,000	30,000	22,500	bar	2,414	2,069	1,552
Max. Pull Back Force	lbs	25,000	25,000	25,000	N	111,205	111,205	111,205
Plunger Stroke	in	22.64	22.64	22.64	mm	575	575	575
Plunger Diameter	in	1.77	2.04	2.36	mm	45	52	60
Extruder L/D Ratio-70 mm								
Std								30:1
Extruder Performance-70 mm								
Alpha 300/2000 (optional)	rpm							265
Barrel Heat Control								
No. of Pyrometers (barrel/nozzle)			10/1				10/1	
Total Heat Capacity	kw		46.4		kw		46.4	
Sled Pull-in Force	ton		4.1		tonf		3.7	
Clamp Specifications								
Tonnage	ton		440		tonf		400	
Maximum Daylight	in		56.1		mm		1,425	
Max./Min. Mold Height in			29.53/9.84		mm		750/250	
Max. Mold Wt.	lbs		12,400		kg		5,625	
Max. Clamp Stroke	in		26.57		mm		675	
Clamp Speed								
Euromap Dry Cycle Time	sec		< 2.9		sec		< 2.9	
Platen Size	in		46.26 x 45.31		mm		1,175 x 1,150	
Tie Bar Spacing	in		33.07 x 33.07		mm		840 x 840	
Tie Rod Diameter	in		5.31		mm		135	
Ejector Stroke	in		7.87		mm		200	
Max. Ejector Force	ton		10.7		tonf		9.7	
Max. Eject Speed	in/sec		10.4		mm/sec		265	
Machine Specifications								
Length, Note 2	in		327.2		mm		8,312	
Width	in		83.6		mm		2,123	
Height	in		98.7		mm		2,507	
Centerline Height	in		58.0		mm		1,474	
Shipping Weight	lbs		49,000		kg		22,226	
Electric Specifications								
Input Power Source								
230 VAC +/- 10% 3Ph 60Hz					Std.			
Machine	kVA				67 (25:1 L/D) or 77 (30:1 L/D)			
Optional Core	kVA				11 (10 Hp) or 16 (15 Hp)			
Power	Max. Total Capacity	kVA			83(25:1 L/D) or 93 (30:1 L/D)			
Supply Capacity	Transformer Size	kVA			93			
Machine Requirements								
Water (Feedthroat)					6 gpm @ 50 psi			
Air					80 psi @ 20 cfm			
Notes: 1) Limitations may apply in certain conditions, 2) Working position with sled fwd								



POWERLINE



440

SPECIFICATIONS

72/96/130 - 70mm

Injection Unit Specifications	English					Metric		
	A	B	C			A	B	C
Injection Capacity, Max. GPPS	72	96	130			2,041	2,722	3,686
Theoretical Disp	in ³	134.1	178.6	243.1	cm ³	2,198	2,926	3,983
Injection Performance, Note 1								
Max. pressure @ rate		30,000 psi @18.4 in ³ /sec	23,200 psi @24.5 in ³ /sec	17,000 psi @36.9 in ³ /sec		2,069 bar @302 cm ³ /sec	1,600 bar @401 cm ³ /sec	1,172 bar @605 cm ³ /sec
Max. rate @ pressure		48.5 in ³ /sec @15,200 psi	64.6 in ³ /sec @11,440 psi	87.9 in ³ /sec @8,400 psi		795 cm ³ /sec @1,048 bar	1,059 cm ³ /sec @789 bar	1,440 cm ³ /sec @580 bar
Max. Inj Speed, Note 1	in/sec	14.75	14.75	14.75	mm/sec	375	375	375
Max. Pack Press	psi	30,000	23,200	17,000	bar	2,069	1,600	1,172
Max. Pull Back Force	lbs	25,000	25,000	25,000	N	111,205	111,205	111,205
Plunger Stroke	in	40.75	40.75	40.75	mm	1,035	1,035	1,035
Plunger Diameter	in	2.04	2.36	2.76	mm	52	60	70
Extruder L/D Ratio-70 mm						30:1		
Extruder Performance-70 mm	rpm					265		
Barrel Heat Control								
No. of Pyrometers (barrel/nozzle)						10/1		
Total Heat Capacity	kw					65.25		
Sled Pull-in Force	ton		4.1		tonf		3.7	

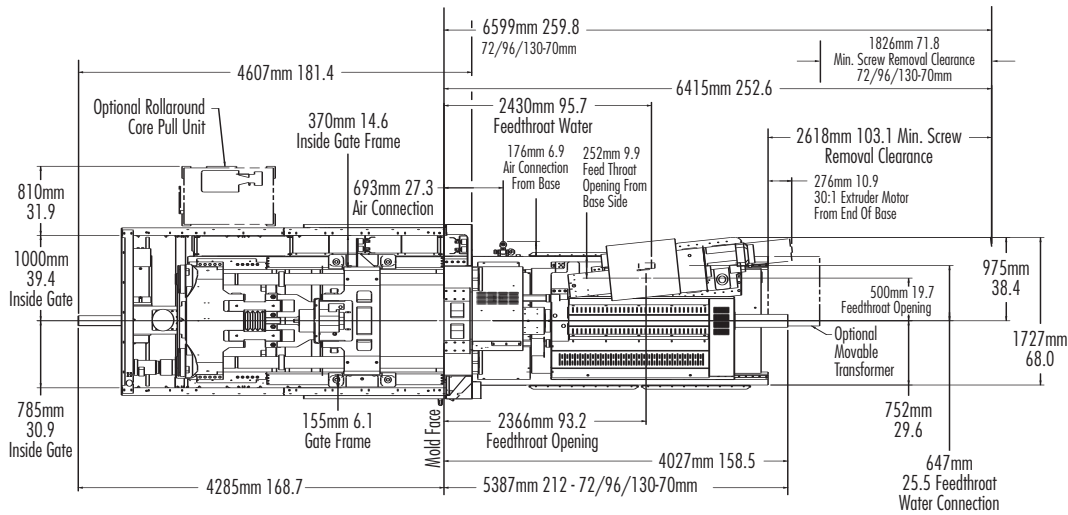
Clamp Specifications				
Tonnage	ton	440	tonf	400
Maximum Daylight	in	56.1	mm	1,425
Max./Min. Mold Height in		29.53/9.84	mm	750/250
Max. Mold Wt.	lbs	12,400	kg	5,625
Max. Clamp Stroke	in	26.57	mm	675
Clamp Speed				
Euromap Dry Cycle Time	sec	< 2.9	sec	< 2.9
Platen Size	in	46.26 x 45.31	mm	1,175 x 1,150
Tie Bar Spacing	in	33.07 x 33.07	mm	840 x 840
Tie Rod Diameter	in	5.31	mm	135
Ejector Stroke	in	7.87	mm	200
Max. Ejector Force	ton	10.7	tonf	9.7
Max. Eject Speed	in/sec	10.4	mm/sec	265

Machine Specifications			
Length, Note 2	in	381.1	mm
Width	in	83.6	mm
Height	in	98.7	mm
Centerline Height	in	58.0	mm
Shipping Weight	lbs	51,820	kg

Electric Specifications			
Input Power Source			
230 VAC +/- 10% 3Ph 60Hz			Std.
Power Machine	kVA		77
Supply Optional Core	kVA	11 (10 Hp) or 16 (15 Hp)	
Capacity Max. Total Capacity	kVA		93
Machine Transformer Size	kVA		93

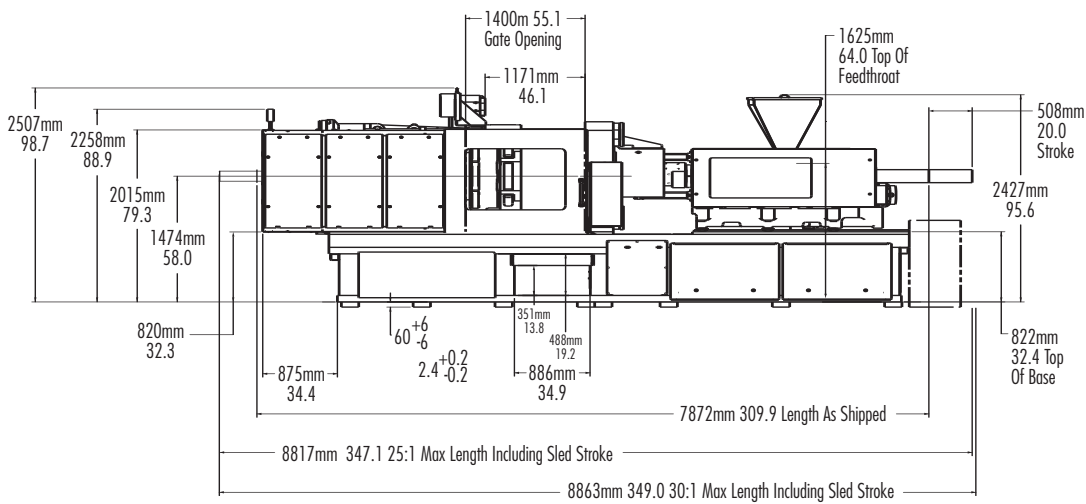
Machine Requirements		
Water (Feedthroat)		6 gpm @ 50 psi
Air		80 psi @ 20 cfm

Notes: 1) Limitations may apply in certain conditions, 2) Working position with sled fwd



PLAN

Machine Length, Sled Forward	
30/40/55-70mm	72/96/130-70mm
327.2	381.1
8,312mm	9,679mm



NT440 - 30/40/55-70mm Shown

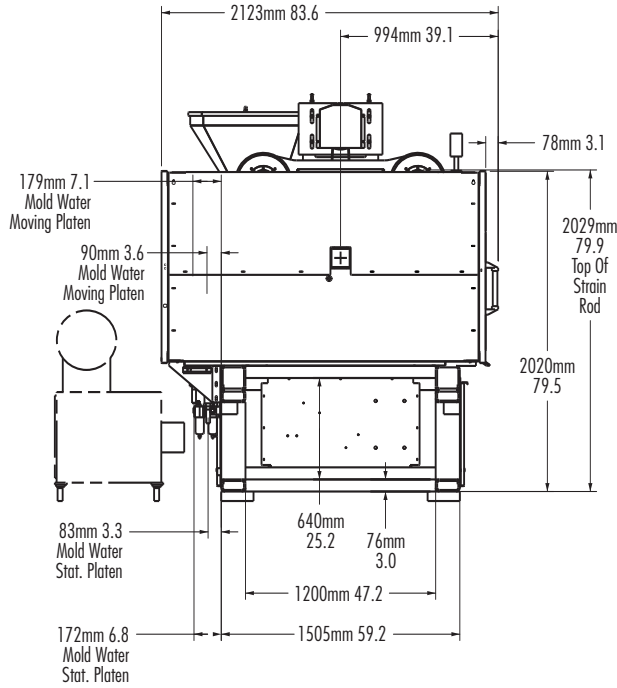
ELEVATION



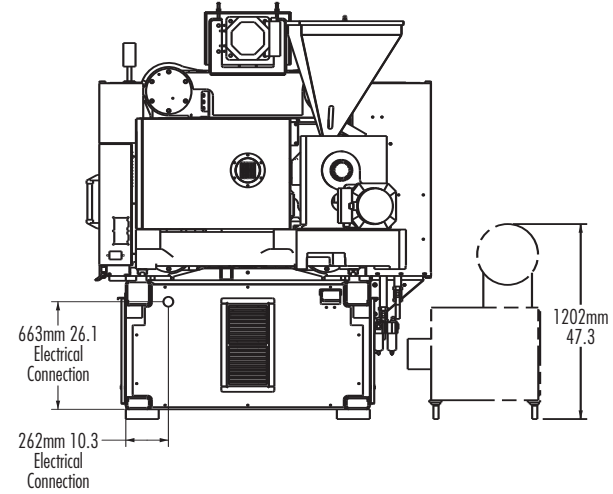
POWERLINE

440

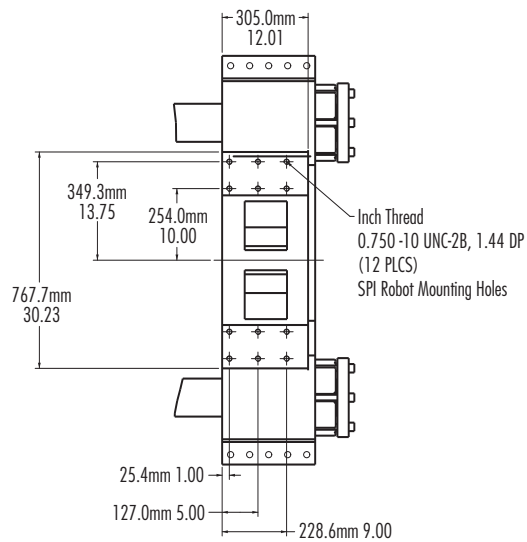
TEMPLATES



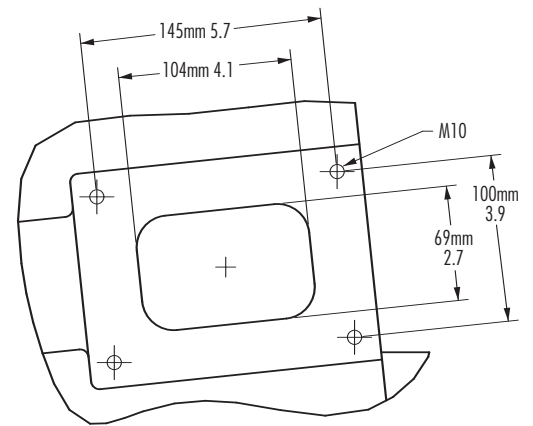
CLAMP END



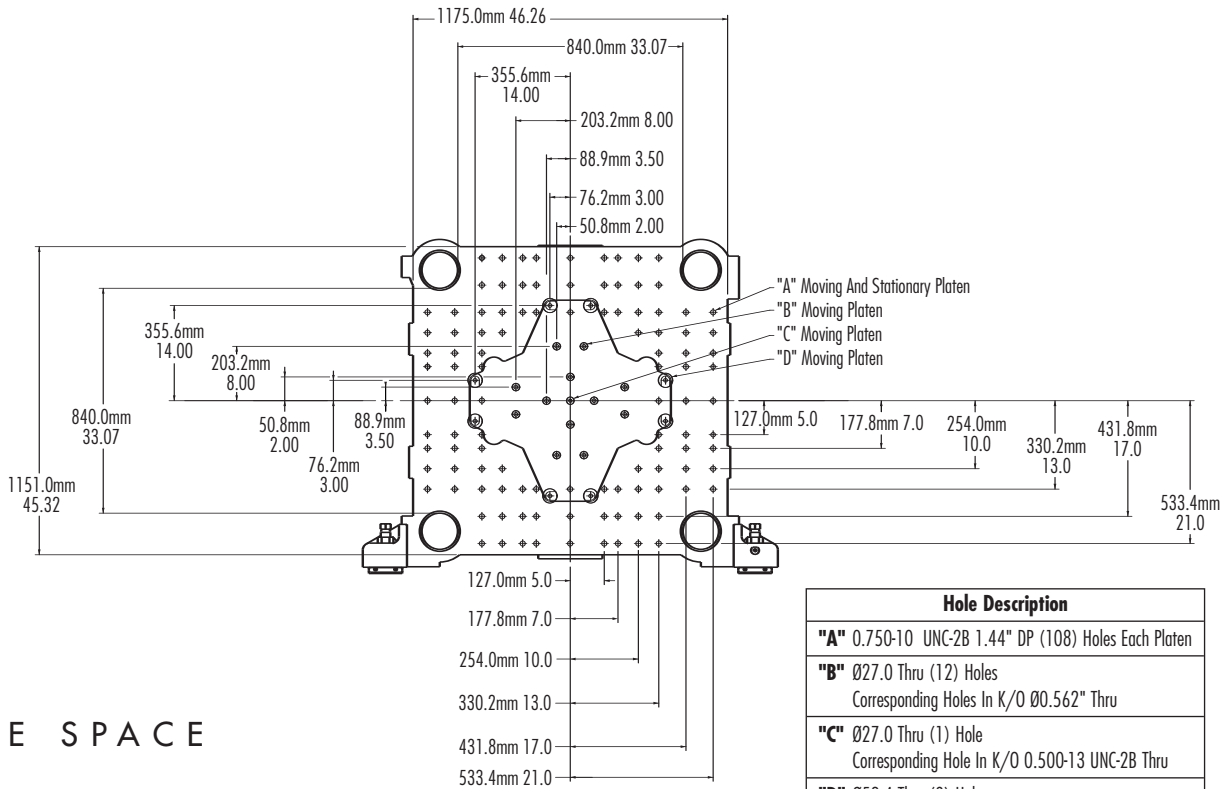
INJECTION END



ROBOT MOUNTING PATTERN

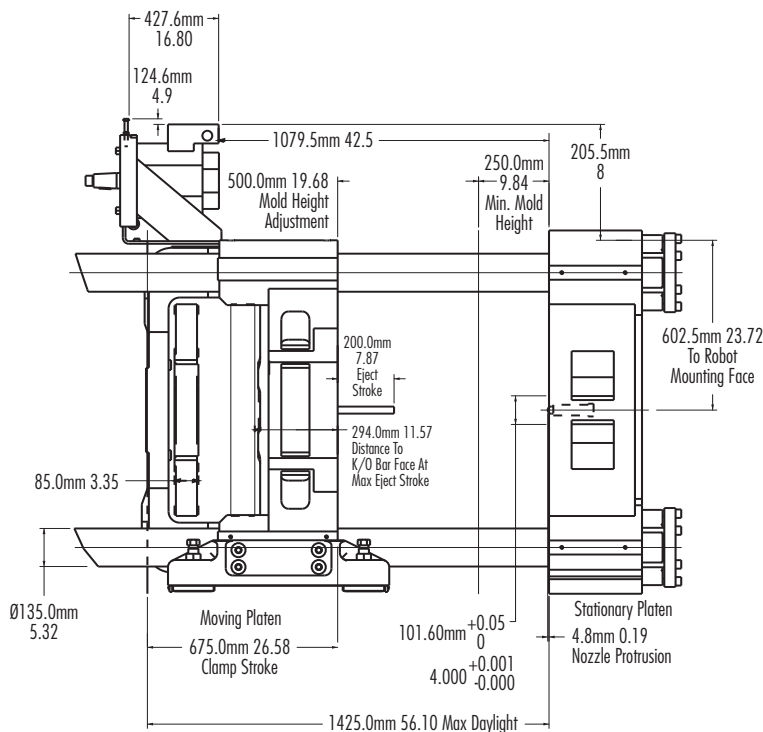


FEED THROAT 70MM EXTRUDER



Hole Description	
"A"	0.750-10 UNC-2B 1.44" DP (108) Holes Each Platen
"B"	Ø27.0 Thru (12) Holes Corresponding Holes In K/O Ø0.562" Thru
"C"	Ø27.0 Thru (1) Hole Corresponding Hole In K/O 0.500-13 UNC-2B Thru
"D"	Ø52.4 Thru (8) Holes Corresponding Holes In K/O Ø0.562" Thru

DIE SPACE



PLATEN