



POWERLINE



1125

SPECIFICATIONS

72/96/130 - 70mm

Injection Unit Specifications	English				Metric			
	A	B	C		A	B	C	
Injection Capacity, Max. GPPS	oz	72	96	130	gm	2,041	2,722	3,686
Theoretical Disp	in ³	134.1	178.6	243.1	cm ³	2,198	2,926	3,983
Injection Performance, Note 1								
Max. pressure @ rate		30,000 psi @18.4 in ³ /sec	23,200 psi @24.5 in ³ /sec	17,000 psi @36.9 in ³ /sec		2,069 bar @302 cm ³ /sec	1,600 bar @401 cm ³ /sec	1,172 bar @605 cm ³ /sec
Max. rate @ pressure		48.5 in ³ /sec @15,200 psi	64.6 in ³ /sec @11,440 psi	87.9 in ³ /sec @8,400psi		795 cm ³ /sec @1,048 bar	1,059 cm ³ /sec @789bar	1,440 cm ³ /sec @580 bar
Max. Inj Speed, Note 1	in/sec	14.75	14.75	14.75	mm/sec	375	375	375
Max. Pack Press	psi	30,000	23,200	17,000	bar	2,069	1,600	1,172
Max. Pull Back Force	lbs	25,000	25,000	25,000	N	111,205	111,205	111,205
Plunger Stroke	in	40.75	40.75	40.75	mm	1,035	1,035	1,035
Plunger Diameter	in	2.04	2.36	2.76	mm	52	60	70
Extruder L/D Ratio-70 mm						30:1		
Extruder Performance-70 mm	rpm					265		
Barrel Heat Control								
No. of Pyrometers (barrel/nozzle)						10/1		
Total Heat Capacity	kw					65.25		
Sled Pull-in Force	ton		4.1		tonf		3.7	

Clamp Specifications				
Tonnage	ton		1,125	tonf
Maximum Daylight	in		103.9	mm
Max./Min. Mold Height	in		51.9/15.7	mm
Max. Mold Wt.	lbs		63,235	kg
Max. Clamp Stroke	in		51.9	mm
Clamp Speed				
Euromap Dry Cycle Time	sec		< 5.2	sec
Platen Size	in		81.5 x 70.9	mm
Tie Bar Spacing	in		61.0 x 47.2	mm
Tie Rod Diameter	in		8.6	mm
Ejector Stroke	in		10.8	mm
Max. Ejector Force	ton		19.7	tonf
Max. Eject Speed	in/sec		8.9	mm/sec

Machine Specifications			
Length, Note 2	in		424.1
Width	in		123.9
Height	in		112.9
Centerline Height	in		58.3
Shipping Weight (Clamp/Injection/Machine Total Weight)	lbs		132,280/21,000/153,280
			kg
			60,000/9,525/69,530

Electric Specifications			
Input Power Source			
230 VAC +/- 10% 3Ph 60Hz			Independent
Power	Machine	kVA	91
Supply	Optional Core	kVA	11 (10 Hp) or 16 (15 Hp)
Capacity	Max. Total Capacity	kVA	107
Main Breaker Size			350
Machine Transformer Size	kVA		118

Machine Requirements		
Water (Feedthroat)		6 gpm @ 50 psi
Air		80 psi @ 20 cfm

Notes: 1) Limitations may apply in certain conditions, 2) Working position with sled fwd

1125

SPECIFICATIONS

74/98/135/195 - 120mm

Injection Unit Specifications	English				Metric					
	A'	A	B	C	A'	A	B	C		
Injection Capacity, Max. GPPS	oz	74	98	135	195	gm	2,098	2,778	3,827	5,528
Theoretical Disp	in ³	134.1	178.6	243.1	357.0	cm ³	2,198	2,926	3,983	5,873
Injection Performance, Note 1										
Max. pressure @ rate		35,000 psi @ 36.3 in ³ /sec	27,150 psi @ 48.4 in ³ /sec	19,950 psi @ 65.9 in ³ /sec	15,740 psi @ 82.4 in ³ /sec		2,414 bar @595 cm ³ /sec	1,872 bar @793 cm ³ /sec	1,376 bar @1,080 cm ³ /sec	1,085 bar @1,350 cm ³ /sec
Max. rate @ Pressure		72.5 in ³ /sec @ 20,975 psi	96.8 in ³ /sec @ 15,720 psi	131.8 in ³ /sec @ 11,570 psi	164.9 in ³ /sec @ 9,250 psi		1,205 cm ³ /sec @ 1,446 bar	1,585 cm ³ /sec @ 1,084 bar	2,144 cm ³ /sec @ 798 bar	2,702 cm ³ /sec @ 638 bar
Max. Inj Speed, Note 1	in/sec	22.0	22.0	22.0	18.7	mm/sec	558.8	558.8	558.8	475.0
Max. Pack Press	psi	35,000	27,150	19,950	15,740	bar	2,414	1,872	1,376	1,085
Max. Pull Back Force	lb	25,000	25,000	25,000	25,000	N	111,205	111,205	111,205	111,205
Plunger Stroke	in.	40.75	40.75	40.75	40.75	mm	1,035	1,035	1,035	1,035
Plunger Diameter	in.	2.04	2.36	2.76	3.34	mm	52	60	70	85
Extruder L/D ratio-120 mm							25:1			
Extruder Performance-120 mm		160rpm @ 6,975 ft-lbs @ 60% duty					7,575 ft-lbs @ 130 rpm @ 60% duty			
Barrel Heat Capacity										
No. Of Pyrometers (barrel/nozzle)							10/1			
Total Heat Capacity	kw						142.75			
Sled Pull-In Force	ton	4.1				tonf	3.7			

Clamp Specifications					
Tonnage	ton	1,125		tonf	10,000
Maximum Daylight	in	103.9		mm	2,640
Max./Min. Mold Height	in	51.9/15.7		mm	1,320/400
Max. Mold Wt.	lbs	63,235		kg	28,685
Max. Clamp Stroke	in	51.9		mm	1320
Clamp Speed					
Euromap Dry Cycle Time	sec	< 5.2		sec	< 5.2
Platen Size	in	81.5 x 70.9		mm	2,070 x 1,800
Tie Bar Spacing	in	61.0 x 47.2		mm	1,550 x 1,200
Tie Rod Diameter	in	8.6		mm	220
Ejector Stroke	in	10.8		mm	275
Max. Ejector Force	ton	19.7		tonf	17.9
Max. Eject Speed	in/sec	8.9		mm/sec	225

Machine Specifications					
Length, Note 2	in	458.1		mm	11,637
Width	in	123.9		mm	3,148
Height	in	112.9		mm	2,867
Centerline Height	in	58.3		mm	1,480
Shipping Weight (Clamp/Injection/Machine Total Weight)	lbs	132,280/21,000/153,280		kg	60,000/9,525/69,530

Electric Specifications					
Input Power Source		230 VAC +/- 10% 3Ph 60Hz			Independent
Power	Machine	kVA			91
Supply	Optional Core	kVA			11 (10 Hp) or 16 (15 Hp)
Capacity	Max. Total Capacity	kVA			107
Main Breaker Size					350
Machine Transformer Size	kVA				118

Machine Requirements					
Water (Feedthroat)					6 gpm @ 50 psi
Air					80 psi @ 20 cfm

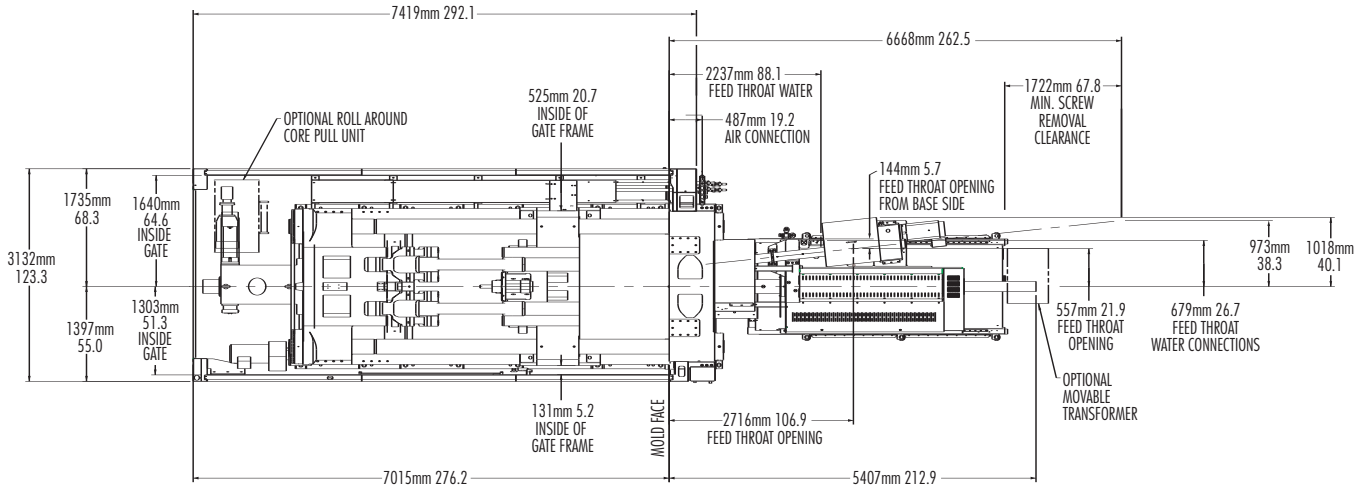
Notes: 1) Limitations may apply in certain conditions, 2) Working position with sled fwd



POWERLINE

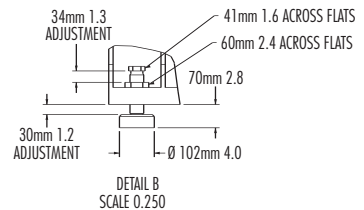
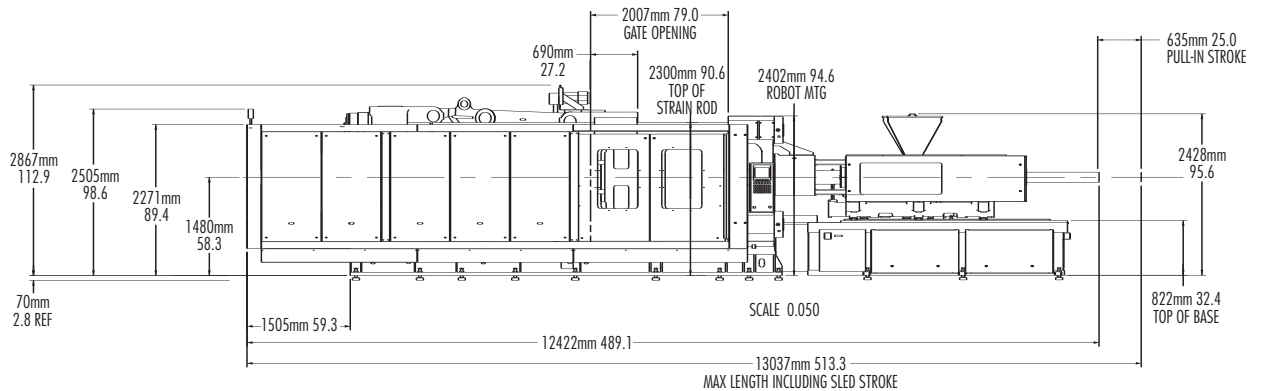
1125

TEMPLATES

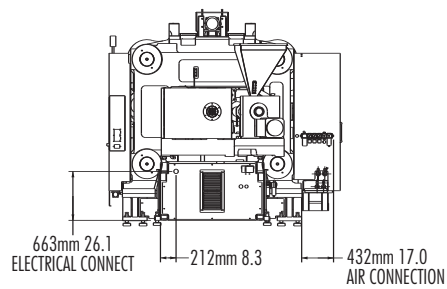
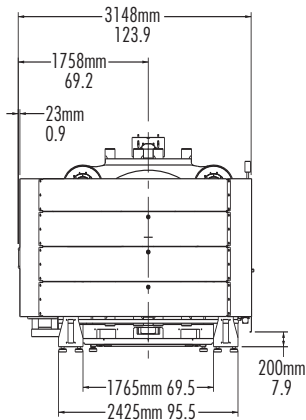


Machine Length, Sled Forward	
72/96/130-70mm	74/98/135-120mm
424.1	458.1
10,771mm	11,637mm

PLAN

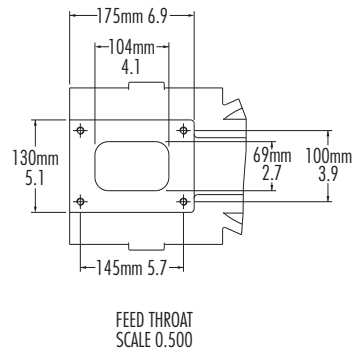
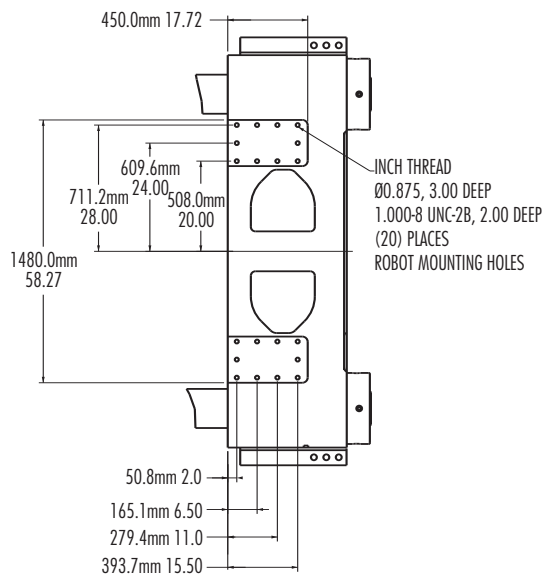


ELEVATION



CLAMP END

INJECTION END



ROBOT MOUNTING PATTERN

FEED THROAT
70MM EXTRUDER

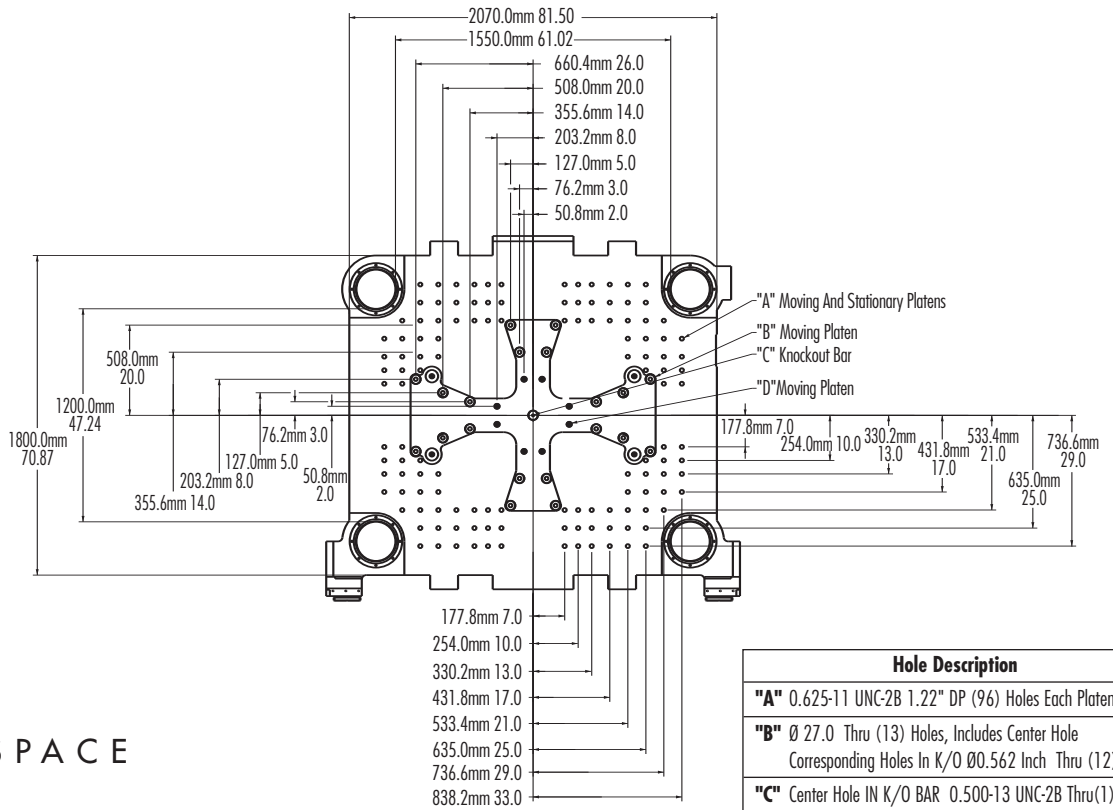


POWERLINE



1125

TEMPLATES



DIE SPACE

