



## PRECISION CONTROL TECHNOLOGY FOR ALL APPLICATIONS

The MOSAIC Control is the high-performance control system that controls and communicates all machine functions and related parts producing processes. MOSAIC Control provides improved reliability, performance, and user-friendliness to keep your process in control. **A** Individual forward and retract manual movement keys for each axis. **B** Factory programmable buttons for added options. **C** Logical grouping and separation of the machine function and manual operator keys. **D** Swing-arm mount can be optimally positioned for each operator, allowing for an unobstructed view of the mold area.



### INTUITIVE OPERATION OPERATING PANEL

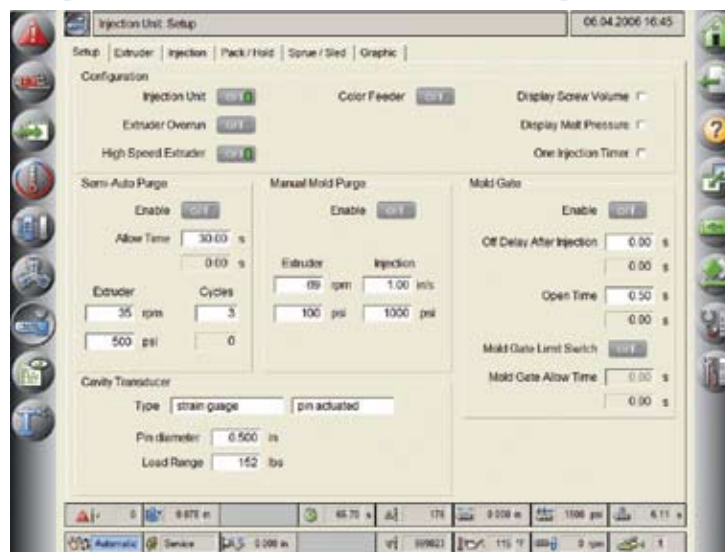
15 Inch touch screen  
framed by a Keyboard

### INTUITIVE OPERATION TOUCH SCREEN

**Message Bar:** Displays the active alarm text or the current menu if no alarm exists

#### Group Access Keys

- Alarms
- Overview
- Mold Data
- Temperatures
- Clamp Unit
- Cores
- Injection
- Production
- Automation



#### Special Function Keys

- Home
- Page Back
- Help
- Screen Export
- Data Export
- Foreground/  
Background Data
- Production
- System

**Status Bar:** The always visible Status Bar provides a quick glance at the current status of critical machine parameters, including actual feedback from sensors, current cycle count and current logged-in user.



### SET POINT OVERVIEW

- Single screen for setting clamp, ejector, injection and extruder
- Follows the configurations that are defined on the Primary Set Up tabs
- Great for quick setups and adjustments
- Improves operator setup efficiency



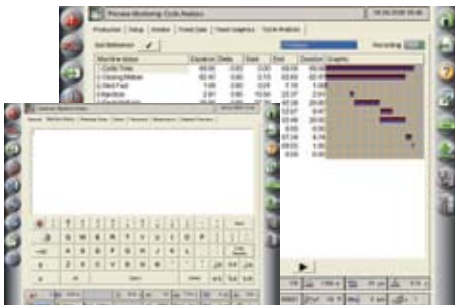
### CONFIGURABLE I/O

- Ultimate flexibility for signal interfaces
- Eight 24 Volt DC Input or Output signals
- Signals are configured to Machine to Machine Cycle Status
- 41 Output Cycle States and 14 Input Permissions
- Configurable Pulse Timers for inputs



### PROCESS MONITORING TREND GRAPHICS

- Monitors trends on-line using trend graphics
- Select from any of the monitored variables (over 50 to select from)



### PROCESS MONITORING

- Track your process for consistency
- High resolution timers and position feedback
- Selectable Alarm Bands
- Choose up to 16 parameters from a list of over 50



### ENHANCE PROCESS GRAPHICS

- Ability to display one or two graphs
- Enables comparison to stored reference point
- Easy to use Cursor Control and Zoom Control
- Adjustable "Y" scaling



### FLEXIBLE INJECTION SETUP

- Up to 10 segments of Injection Velocity
- Transfer each segment on Position, Volume, Pressure or Time
- Up to 10 Pack/Hold Pressure/Time/Velocisty steps
- Display either Hydraulic or Melt pressure
- Graphic display of Pressure and Velocity actual values

## MOSAIC CONTROL

- 15 Inch Diagonal Screen
- TFT Flat Panel
- Touch Screen (Analog, Resistive)
- Dual Intel Processors
- Swing Arm Mount
- IP65 Protection (against contamination)

## MOSAIC FEATURES

- Two USB 2.0 Ports
- Ethernet port - TCP/IP & FTP protocols
- All-digital position feedback for accuracy

- Direct Menu Access
- Machine History Notepad
- Setpoint Overview
- Enhanced Operator ID
- Alarm Log
- Change Log
- Process Monitor
- Statistical Process Control (SPC)
- Volume/Position/Pressure Injection Setpoints
- Melt or Hydraulic Pressure Transfer
- Freely Configurable I/O
- Enhanced Plotting Graphics with Cursors
- Built-in Web Server

## MOSAIC OPERATOR SCREENS

- Screen layouts are clear, concise and easy to understand
- Direct Group Access Keys for quick machine setup
- Pop-up keyboards for data and text entry
- Drop down selection boxes for choosing items from a list
- Lighted On/Off buttons
- Choice of Language and Units of Measurement