

MAXIMA MM 580 WP

CLAMP UNIT SPECIFICATIONS

	English		Metric	
Clamp Force	tons	580	kN	5150
Clamp Opening Force	tons	29	kN	257
Clamp Stroke	in.	71.9	mm	1825
Clamp Speed Open	in./sec.	41	mm/sec.	1041
Clamp Speed Close	in./sec.	39	mm/sec.	991
Maximum Daylight	in.	81.7	mm	2075
Min/Max Mold Thickness	in.	9.8 / 39.4	mm	250 / 1000
Maximum Mold Weight	lbs.	22,100	kgs	10025
Platen Size (H x V)	in.	56.3 x 49.2	mm	1430 x 1250
Distance Between Tie Rods (H x V)	in.	43.3 x 36.2	mm	1100 x 920
Tie Rod Diameter	in.	5.71	mm	145
Ejector Stroke (Max)	in.	7.9	mm	200
Ejector Force @2000 psi	tons	13.2	kN	117

MACHINE SPECIFICATIONS

	English		Metric	
Overall Length (w/ 3470 IU)	in.	354.1	mm	8994
Overall Width	in.	103.0	mm	2615
Overall Height	in.	129.0	mm	3278
Shipping Weight (without oil)	lbs.	57,250	kg	26020
Hydraulic System Pressure	psi	2,950	bar	203
Variable Volume Pump Capacity	gpm	60	L/min	227
Fixed Pump Capacity	gpm	72	L/min	273
Injection and Extruder	gpm	111	L/min	420
Eject and Core Pull	gpm	21	L/min	79
Electric Motor	hp	100	kw	75
Total Oil Reservoir Capacity	gal	260	L	984
Heat Exchanger Water @85° F	gpm	21	L/min	79



MAXIMA MM580WP

INJECTION UNIT SPECIFICATIONS

	English	A	B	C	Metric	A	B	C
Injection Capacity Maximum								
G.P. Styrene (theoretical)	oz	46	60	76	g	1304	1701	2155
Displacement	in ³	84.5	110.4	139.8	cm ³	1385	1810	2290
Injection Pressure Maximum	psi	33,200	27,800	21,900	bar	2290	1917	1510
Injection Rate - Standard	in ³ /sec	29	39	49	cm ³ /sec	475	639	803
Injection Rate - MAXIMA PLUS	in ³ /sec	82	107	135	cm ³ /sec	1434	1753	2212
Screw Stroke	in	14.2	14.2	14.2	mm	360	360	360
Screw Diameter	in	2.76	3.15	3.54	mm	70	80	90
Screw L/D		22.0	22.8	20.0		22.0	22.8	22.0
Low Torque Screw Speed Maximum	rpm	289	253	225	rpm	289	253	225
Low Torque at Screw	in-lb	26,900	26,900	26,900	Nm	3037	3037	3037
	@ psi	2,900	2,900	2,900	@ bar	200	200	200
Recovery Rate (GP Styrene) calculated	oz/sec	3.2	4.0	4.7	gr/sec	90	115	134
High Torque Screw Speed Maximum	rpm	261	253	225	rpm	261	253	225
High Torque at Screw	in-lb	40,700	40,700	40,700	Nm	4595	4595	4595
	@ psi	2,900	2,900	2,900	@ bar	200	200	200
Recovery Rate (GP Styrene) calculated	oz/sec	3.2	4.0	4.7	gr/sec	90	115	134
Number of Pyrometers (barrel/nozzle)		4 / 1	4 / 1	4 / 1		4 / 1	4 / 1	4 / 1
Total Heat Capacity	kW	35.8	41.2	41.2	kW	35.8	41.2	41.2

INJECTION UNIT SPECIFICATIONS

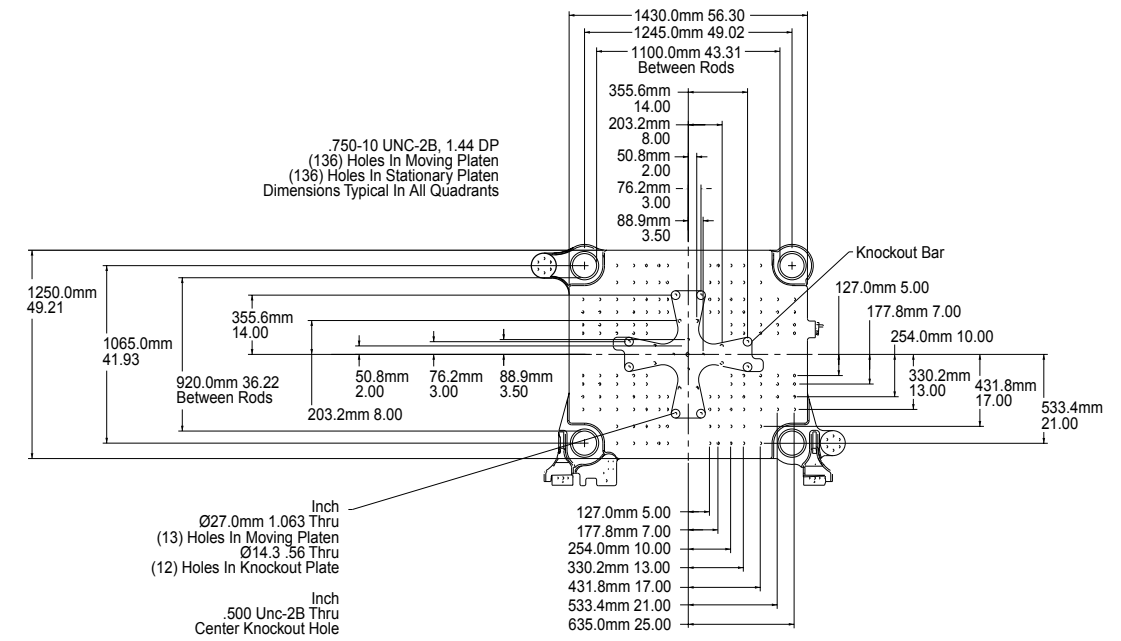
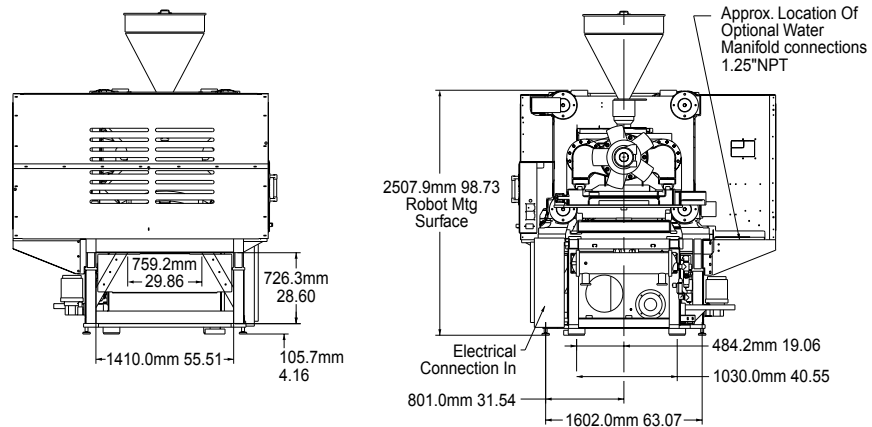
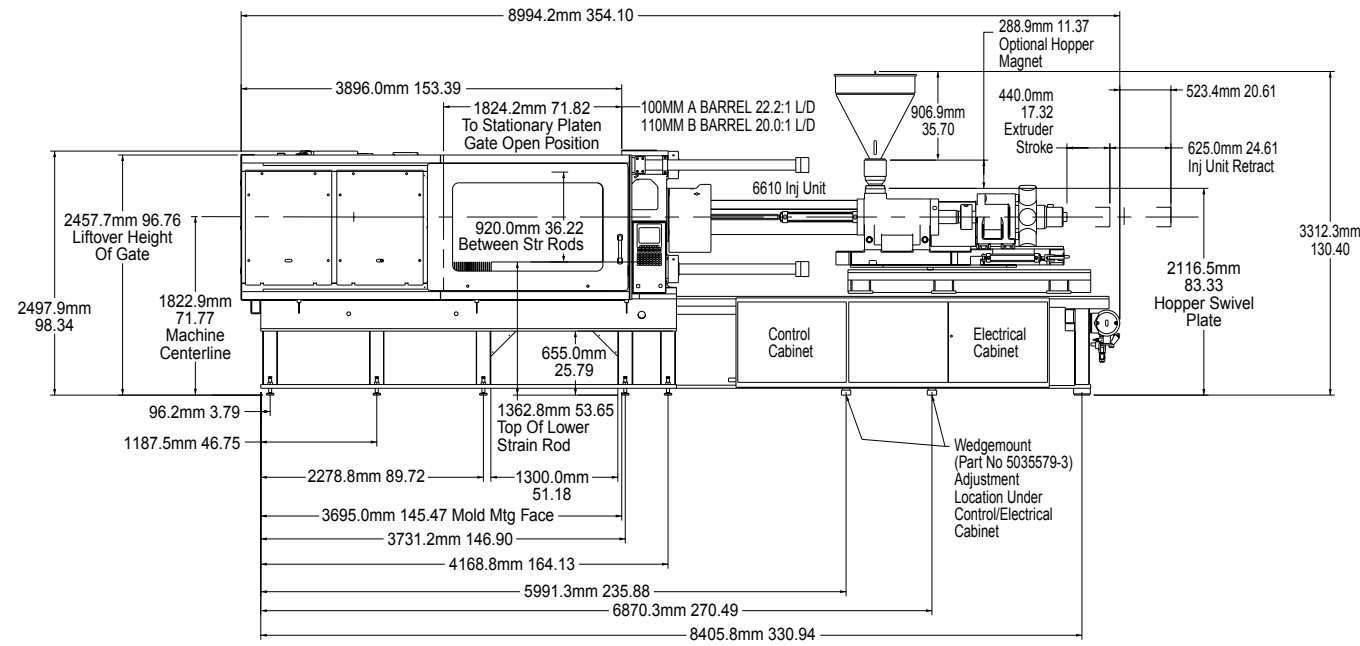
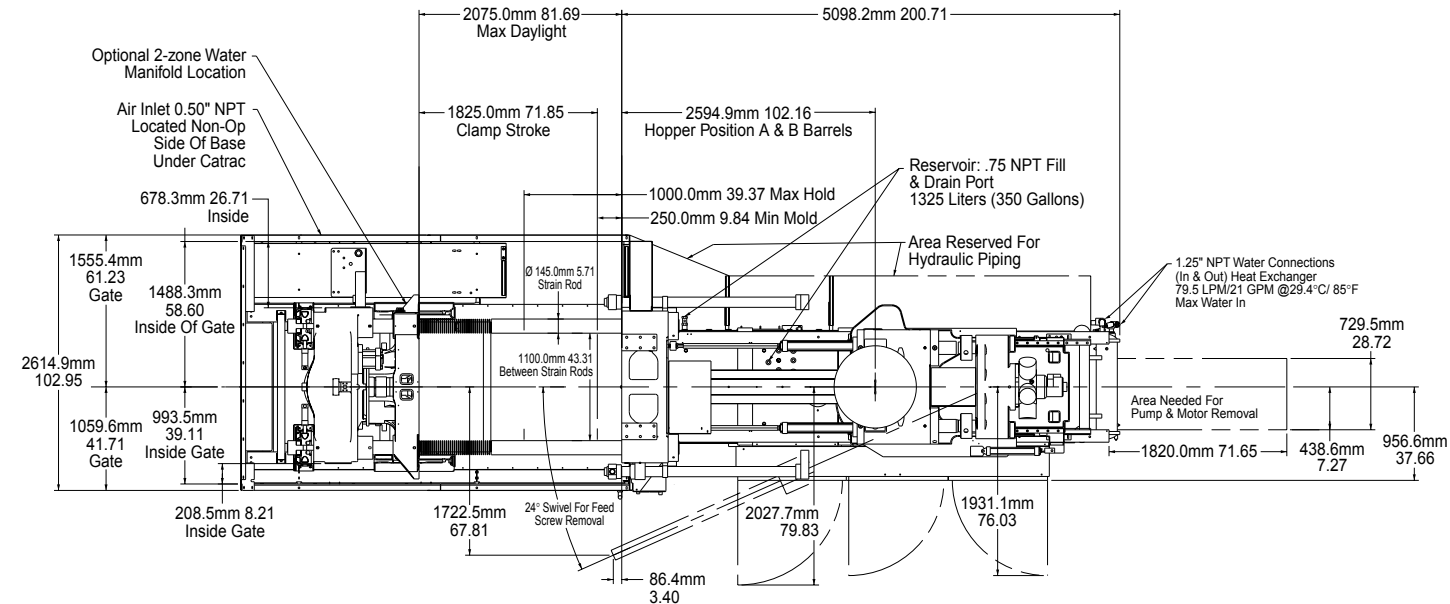
	English	A	B	Metric	A	B
Injection Capacity Maximum						
G.P. Styrene (theoretical)	oz	85	105	g	2410	2977
Displacement	in ³	155.3	191.7	cm ³	2545	3142
Injection Pressure Maximum	psi	27,800	22,500	bar	1917	1552
Injection Rate - Standard	in ³ /sec	39	48	cm ³ /sec	639	787
Injection Rate - MAXIMA PLUS	in ³ /sec	135	167	cm ³ /sec	2212	2736
Screw Stroke	in	15.7	15.7	mm	400	400
Screw Diameter	in	3.54	3.94	mm	90	100
Screw L/D		22.2	20.0		22.2	20.0
Low Torque Screw Speed Maximum	rpm	225	202	rpm	225	202
Low Torque at Screw	in-lb	36,100	36,100	Nm	4076	4076
	@ psi	2,900	2,900	@ bar	200	200
Recovery Rate (GP Styrene) calculated	oz/sec	4.7	5.8	gr/sec	134	164
High Torque Screw Speed Maximum	rpm	194	194	rpm	194	194
High Torque at Screw	in-lb	54,800	54,800	Nm	6187	6187
	@ psi	2,900	2,900	@ bar	200	200
Recovery Rate (GP Styrene) calculated	oz/sec	4.1	5.5	gr/sec	115	157
Number of Pyrometers (barrel/nozzle)		4 / 1	4 / 1		4 / 1	4 / 1
Total Heat Capacity	kW	53.8	53.8	kW	53.8	53.8

INJECTION UNIT SPECIFICATIONS

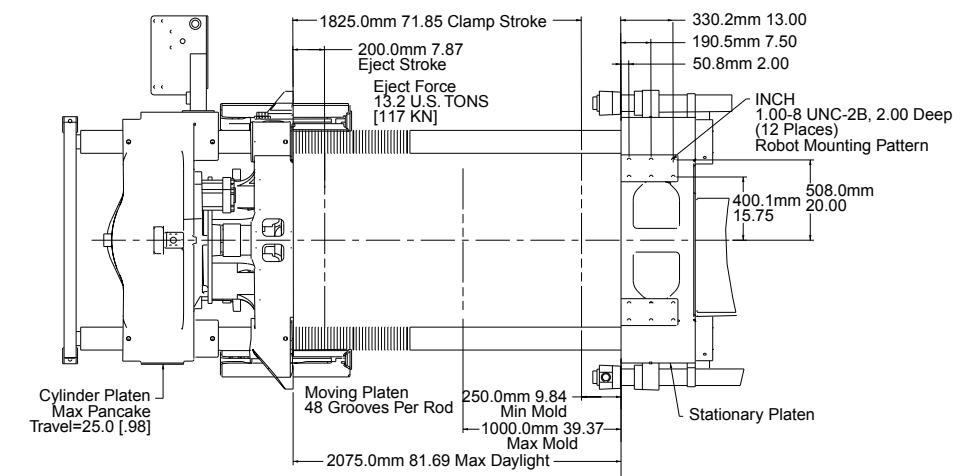
	English	A	B	Metric	A	B
Injection Capacity Maximum						
G.P. Styrene (theoretical)	oz	116	140	g	3289	3969
Displacement	in ³	210.9	255.2	cm ³	3456	4181
Injection Pressure Maximum	psi	27,700	22,900	bar	1910	1579
Injection Rate - Standard	in ³ /sec	39	47	cm ³ /sec	639	770
Injection Rate - MAXIMA PLUS	in ³ /sec	136	165	cm ³ /sec	2228	2703
Screw Stroke	in	17.3	17.3	mm	440	440
Screw Diameter	in	3.94	4.33	mm	100	110
Screw L/D		22.2	20.0		22.2	20.0
Low Torque Screw Speed Maximum	rpm	202	184	rpm	202	184
Low Torque at Screw	in-lb	48,200	48,200	Nm	5442	5442
	@ psi	2,900	2,900	@ bar	200	200
Recovery Rate (GP Styrene) calculated	oz/sec	5.8	6.6	gr/sec	164	188
High Torque Screw Speed Maximum	rpm	129	129	rpm	129	129
High Torque at Screw	in-lb	82,400	82,400	Nm	9303	9303
	@ psi	2,900	2,900	@ bar	200	200
Recovery Rate (GP Styrene) calculated	oz/sec	3.7	4.6	gr/sec	105	131
Number of Pyrometers (barrel/nozzle)		4 / 1	4 / 1		4 / 1	4 / 1
Total Heat Capacity	kW	56.0	56.0	kW	56.0	56.0

INJECTION UNIT SPECIFICATIONS

	English	A	B	Metric	A	B
Injection Capacity Maximum						
G.P. Styrene (theoretical)	oz	178	230	g	5046	6521
Displacement	in ³	324.8	419.4	cm ³	5322	6872
Injection Pressure Maximum	psi	27,500	21,200	bar	1897	1462
Injection Rate - Standard	in ³ /sec	52	67	cm ³ /sec	852	1098
Screw Stroke	in	22.0	22.0	mm	560	560
Screw Diameter	in	4.33	4.92	mm	110	125
Screw L/D		22.7	20.0		22.7	20.0
Low Torque Screw Speed Maximum	rpm	181	162	rpm	181	162
Low Torque at Screw	in-lb	69,500	69,500	Nm	7847	7847
	@ psi	2,300	2,300	@ bar	159	159
Recovery Rate (GP Styrene) calculated	oz/sec	6.5	8.2	gr/sec	184	234
High Torque Screw Speed Maximum	rpm	116	116	rpm	116	116
High Torque at Screw	in-lb	107,800	107,800	Nm	12171	12171
	@ psi	2,300	2,300	@ bar	159	159
Recovery Rate (GP Styrene) calculated	oz/sec	4.2	5.9	gr/sec	118	167
Number of Pyrometers (barrel/nozzle)		4 / 1	4 / 1		4 / 1	4 / 1
Total Heat Capacity	kW	61.2	61.2	kW	61.2	61.2



TOP



SIDE

