

MAXIMA MM 310 WP

CLAMP UNIT SPECIFICATIONS

	English		Metric	
Clamp Force	tons	310	kN	2750
Clamp Opening Force	tons	14	kN	124
Clamp Stroke	in.	41.7	mm	1060
Clamp Speed Open	in./sec.	45	mm/sec.	1143
Clamp Speed Close	in./sec.	45	mm/sec.	1143
Maximum Daylight	in.	49.6	mm	1260
Min/Max Mold Thickness	in.	7.9 / 25.6	mm	200 / 650
Maximum Mold Weight	lbs.	8,295	kgs	3762
Platen Size (H x V)	in.	47.0 x 47.0	mm	1195 x 940
Distance Between Tie Rods (H x V)	in.	36.0 x 26.0	mm	915 x 660
Tie Rod Diameter	in.	4.53	mm	115
Ejector Stroke (Max)	in.	6.3	mm	160
Ejector Force @2000 psi	tons	8.0	kN	71

MACHINE SPECIFICATIONS

	English		Metric	
Overall Length (w/ 3470 IU)	in.	259.4	mm	6588
Overall Width	in.	88.6	mm	2251
Overall Height	in.	87.1	mm	2300
Shipping Weight (without oil)	lbs.	30,795	kg	13970
Hydraulic System Pressure	psi	2,950	bar	203
Variable Volume Pump Capacity	gpm	66	L/min	250
Fixed Pump Capacity	gpm	15	L/min	57
Injection and Extruder	gpm	66	L/min	250
Eject and Core Pull	gpm	15	L/min	57
Electric Motor	hp	60	kw	45
Total Oil Reservoir Capacity	gal	174	L	659
Heat Exchanger Water @85° F	gpm	15	L/min	56.7



INJECTION UNIT SPECIFICATIONS

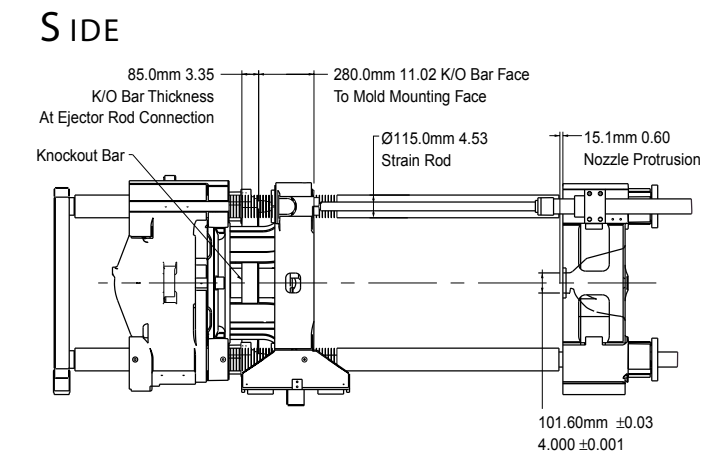
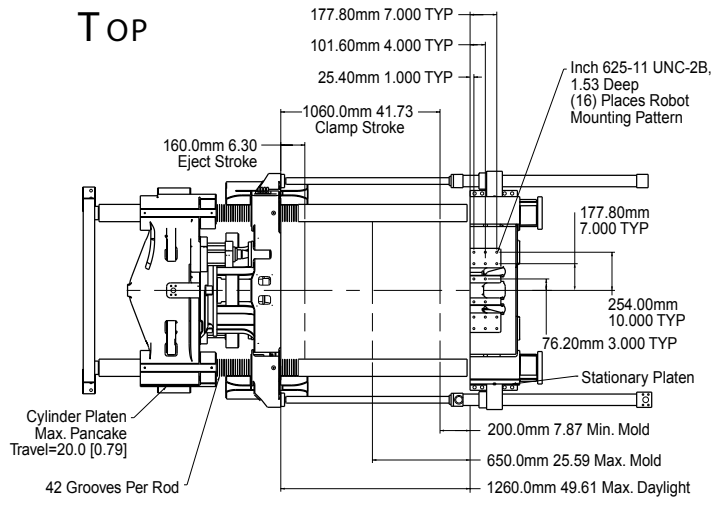
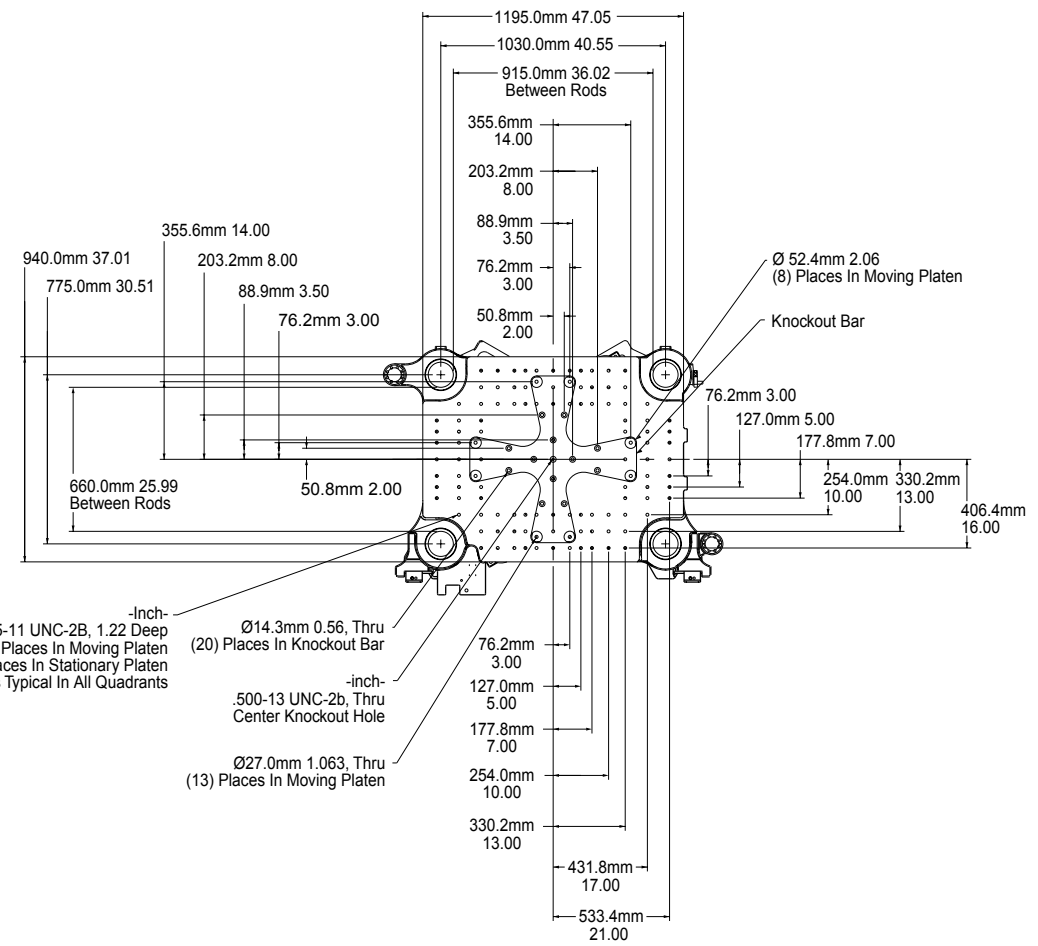
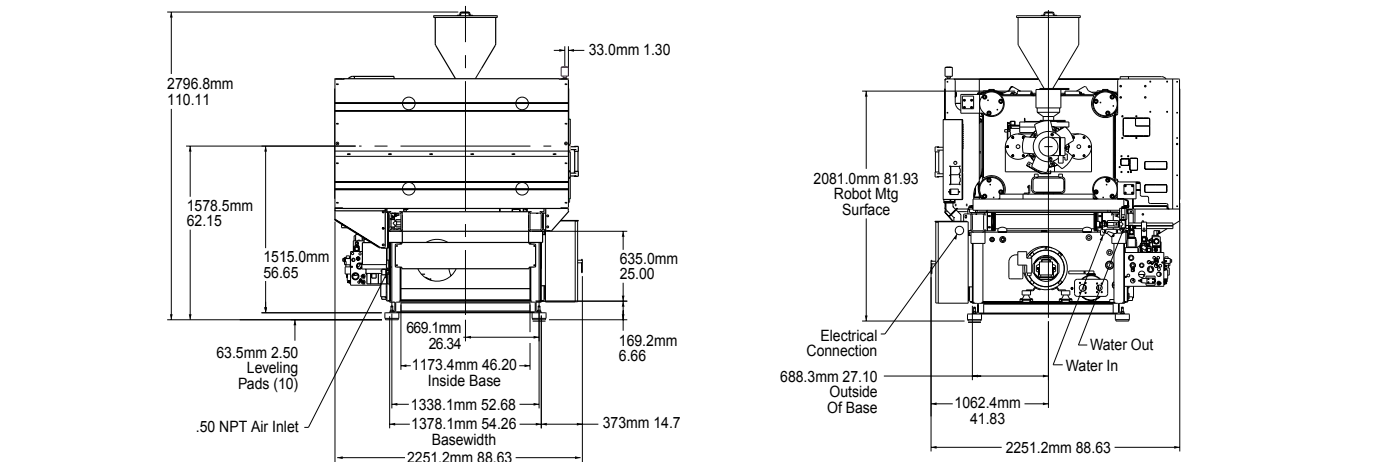
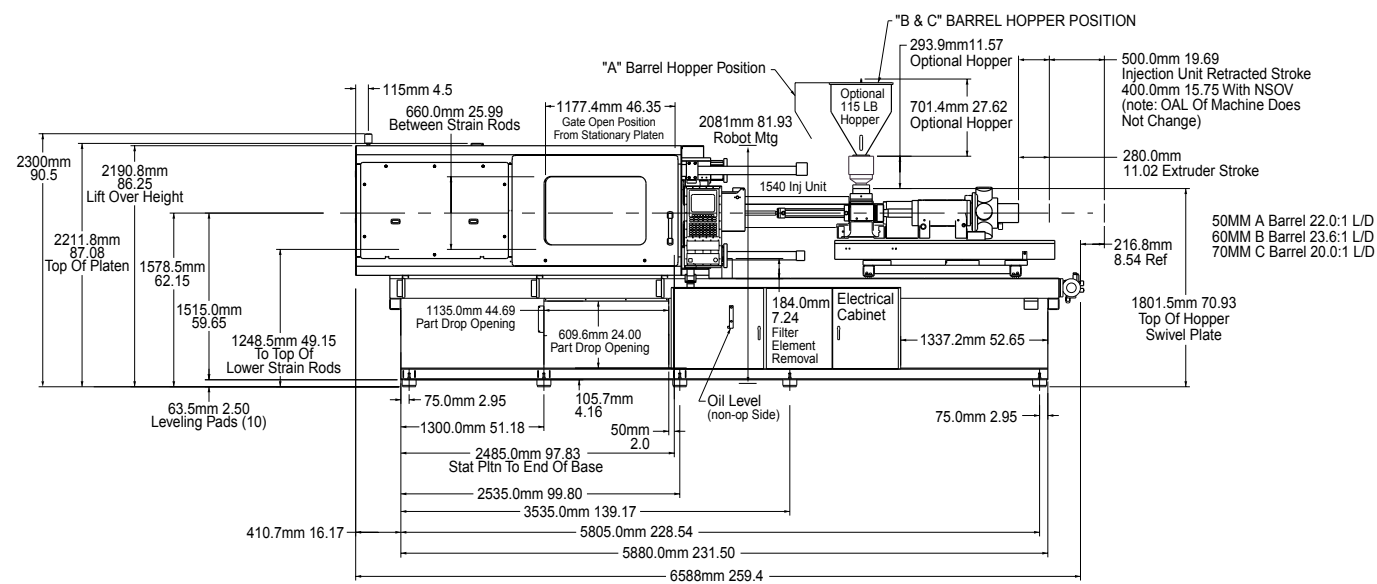
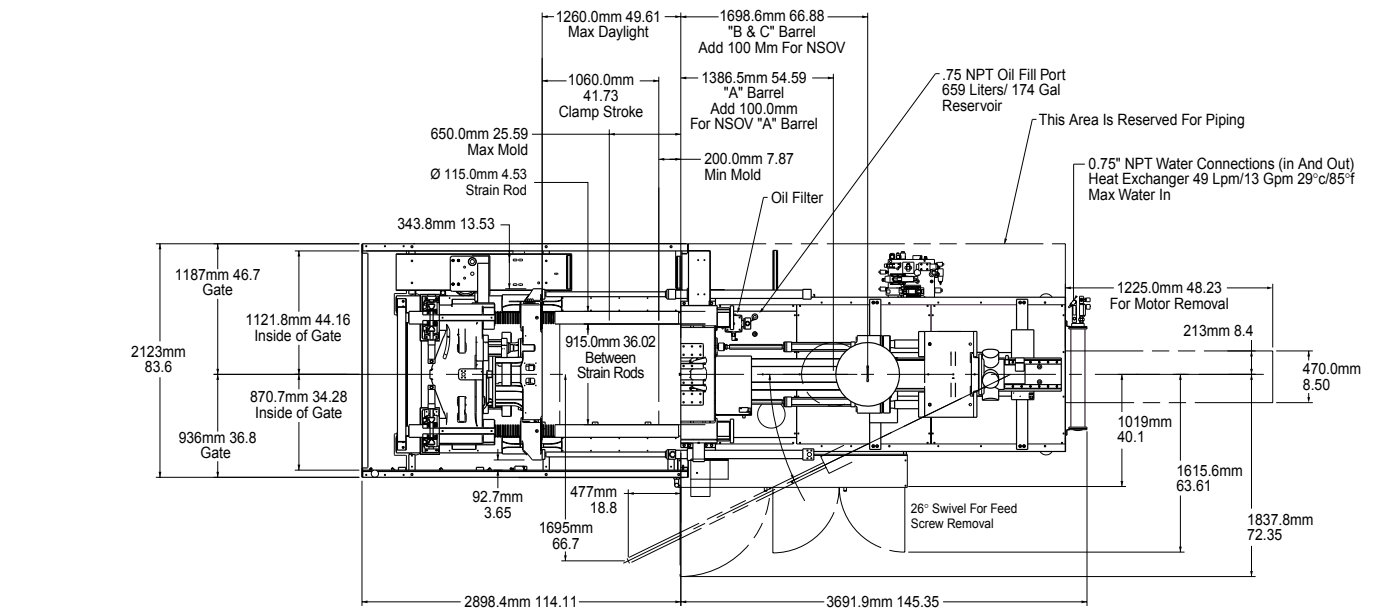
	English	A	B	C	Metric	A	B	C
Injection Capacity Maximum								
G.P. Styrene (theoretical)	oz	12	15	22	g	340	425	624
Displacement	in ³	23.3	28.8	41.4	cm ³	382	471	679
Injection Pressure Maximum	psi	32,600	29,800	20,700	bar	2248	2055	1428
Injection Rate - Standard	in ³ /sec	17	21	31	cm ³ /sec	279	344	508
Injection Rate - MAXIMA PLUS	in ³ /sec	48	59	86	cm ³ /sec	786	966	1409
Screw Stroke	in	9.4	9.4	9.4	mm	240	240	240
Screw Diameter	in	1.77	1.97	2.36	mm	45	50	60
Screw L/D		22.0	24.2	20.0		22.0	24.2	22.0
Low Torque Screw Speed Maximum	rpm	449	404	337	rpm	449	404	337
Low Torque at Screw	in-lb	8,900	8,900	8,900	Nm	1005	1005	1005
	@ psi	2,900	2,900	2,900	@ bar	200	200	200
Recovery Rate (GP Styrene) calculated	oz/sec	1.6	2.0	2.7	gr/sec	46	57	76
High Torque Screw Speed Maximum	rpm	449	404	337	rpm	449	404	337
High Torque at Screw	in-lb	13,300	13,300	13,300	Nm	1502	1502	1502
	@ psi	2,900	2,900	2,900	@ bar	200	200	200
Recovery Rate (GP Styrene) calculated	oz/sec	1.6	2.0	2.7	gr/sec	46	57	76
Number of Pyrometers (barrel/nozzle)		4 / 1	4 / 1	4 / 1		4 / 1	4 / 1	4 / 1
Total Heat Capacity	kW	14.8	18.1	18.1	kW	14.8	18.1	18.1

INJECTION UNIT SPECIFICATIONS

	English	A	B	C	Metric	A	B	C
Injection Capacity Maximum								
G.P. Styrene (theoretical)	oz	18	26	36	g	510	737	1021
Displacement	in ³	33.5	48.3	65.8	cm ³	550	792	1078
Injection Pressure Maximum	psi	32,400	28,100	20,600	bar	2234	1938	1421
Injection Rate - Standard	in ³ /sec	15	22	31	cm ³ /sec	246	361	508
Injection Rate - MAXIMA PLUS	in ³ /sec	59	86	117	cm ³ /sec	966	1409	1917
Screw Stroke	in	11.0	11.0	11.0	mm	280	280	280
Screw Diameter	in	1.97	2.36	2.76	mm	50	60	70
Screw L/D		22.0	23.6	20.0		22.0	23.6	22.0
Low Torque Screw Speed Maximum	rpm	404	337	289	rpm	404	337	289
Low Torque at Screw	in-lb	14,200	14,200	14,200	Nm	1603	1603	1603
	@ psi	2,900	2,900	2,900	@ bar	200	200	200
Recovery Rate (GP Styrene) calculated	oz/sec	2.0	2.7	3.2	gr/sec	57	76	90
High Torque Screw Speed Maximum	rpm	296	296	289	rpm	296	296	289
High Torque at Screw	in-lb	21,300	21,300	21,300	Nm	2405	2405	2405
	@ psi	2,900	2,900	2,900	@ bar	200	200	200
Recovery Rate (GP Styrene) calculated	oz/sec	1.5	2.4	3.2	gr/sec	42	67	90
Number of Pyrometers (barrel/nozzle)		4 / 1	4 / 1	4 / 1		4 / 1	4 / 1	4 / 1
Total Heat Capacity	kW	19.3	22.2	22.2	kW	19.3	22.2	22.2

INJECTION UNIT SPECIFICATIONS

	English	A	B	C	Metric	A	B	C
Injection Capacity Maximum								
G.P. Styrene (theoretical)	oz	30	41	54	g	851	1162	1531
Displacement	in ³	55.2	75.2	98.2	cm ³	905	1232	1609
Injection Pressure Maximum	psi	32,400	26,900	20,600	bar	2234	1855	1421
Injection Rate - Standard	in ³ /sec	21	29	37	cm ³ /sec	344	475	606
Injection Rate - MAXIMA PLUS	in ³ /sec	86	117	153	cm ³ /sec	1409	1917	2507
Screw Stroke	in	12.6	12.6	12.6	mm	320	320	320
Screw Diameter	in	2.36	2.76	3.15	mm	60	70	80
Screw L/D		22.0	22.9	20.0		22.0	22.9	22.0
Low Torque Screw Speed Maximum	rpm	337	289	253	rpm	337	289	253
Low Torque at Screw	in-lb	22,300	22,300	22,300	Nm	2518	2518	2518
	@ psi	2,900	2,900	2,900	@ bar	200	200	200
Recovery Rate (GP Styrene) calculated	oz/sec	2.7	3.2	4.0	gr/sec	76	90	115
High Torque Screw Speed Maximum	rpm	221	221	221	rpm	221	221	221
High Torque at Screw	in-lb	34,700	34,700	34,700	Nm	3918	3918	3918
	@ psi	2,900	2,900	2,900	@ bar	200	200	200
Recovery Rate (GP Styrene) calculated	oz/sec	1.8	2.4	3.5	gr/sec	50	69	100
Number of Pyrometers (barrel/nozzle)		4 / 1	4 / 1	4 / 1		4 / 1	4 / 1	4 / 1
Total Heat Capacity	kW	24.3	29.1	29.1	kW	24.3	29.1	29.1



DIE SPACE